

AENC-LSTC-ENG-DWG-0002

Norwich to Tilbury

Volume 2: Plans, Drawings and Sections

**Document: 2.16 Trees and Hedgerows to be Removed and or
Managed Plans - Section H**

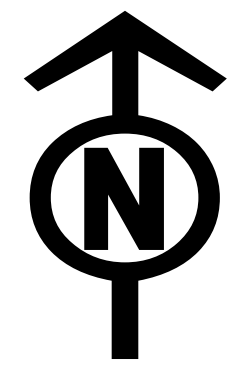
Final Issue B

May 2026

Planning Inspectorate Reference: EN020027

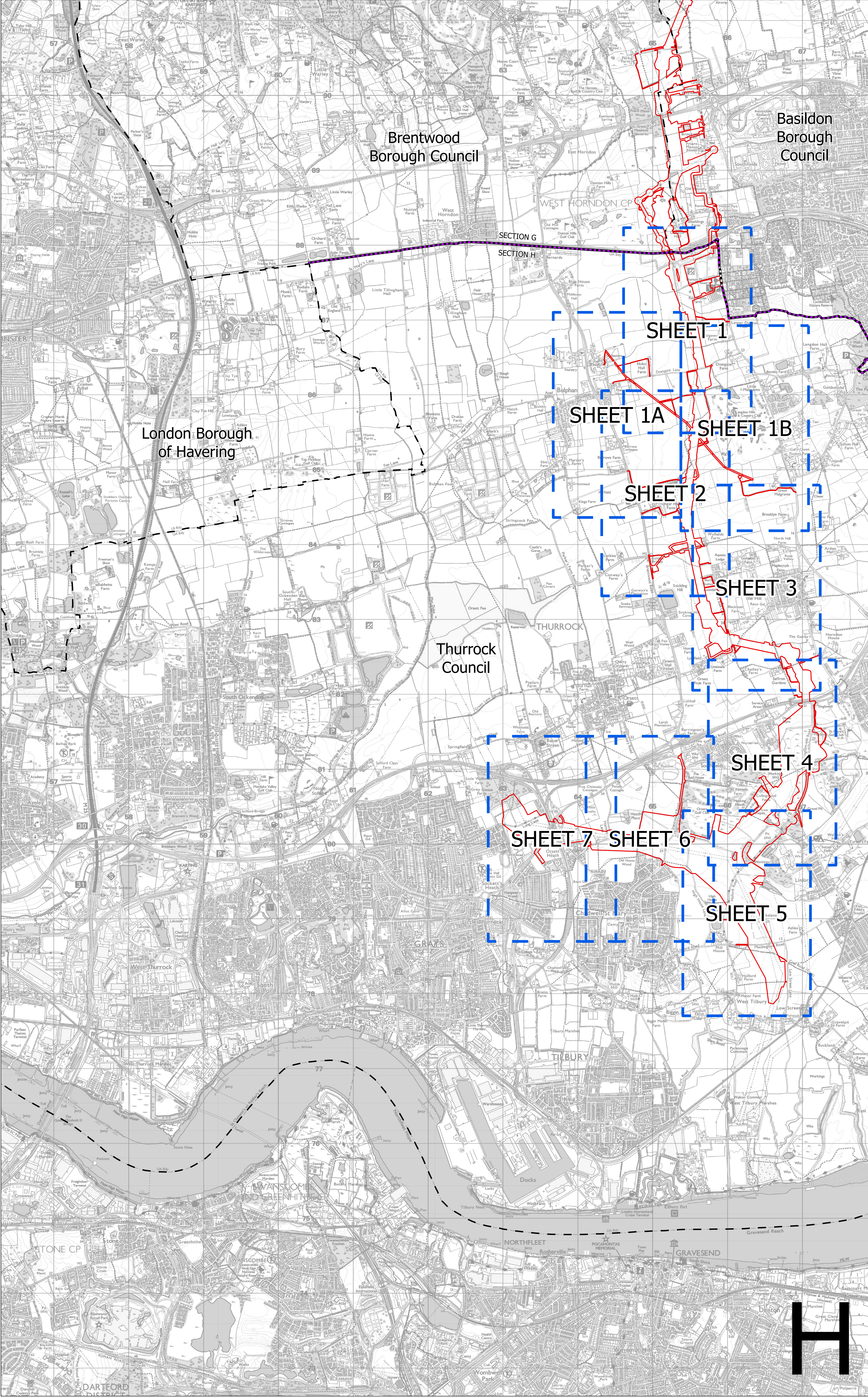
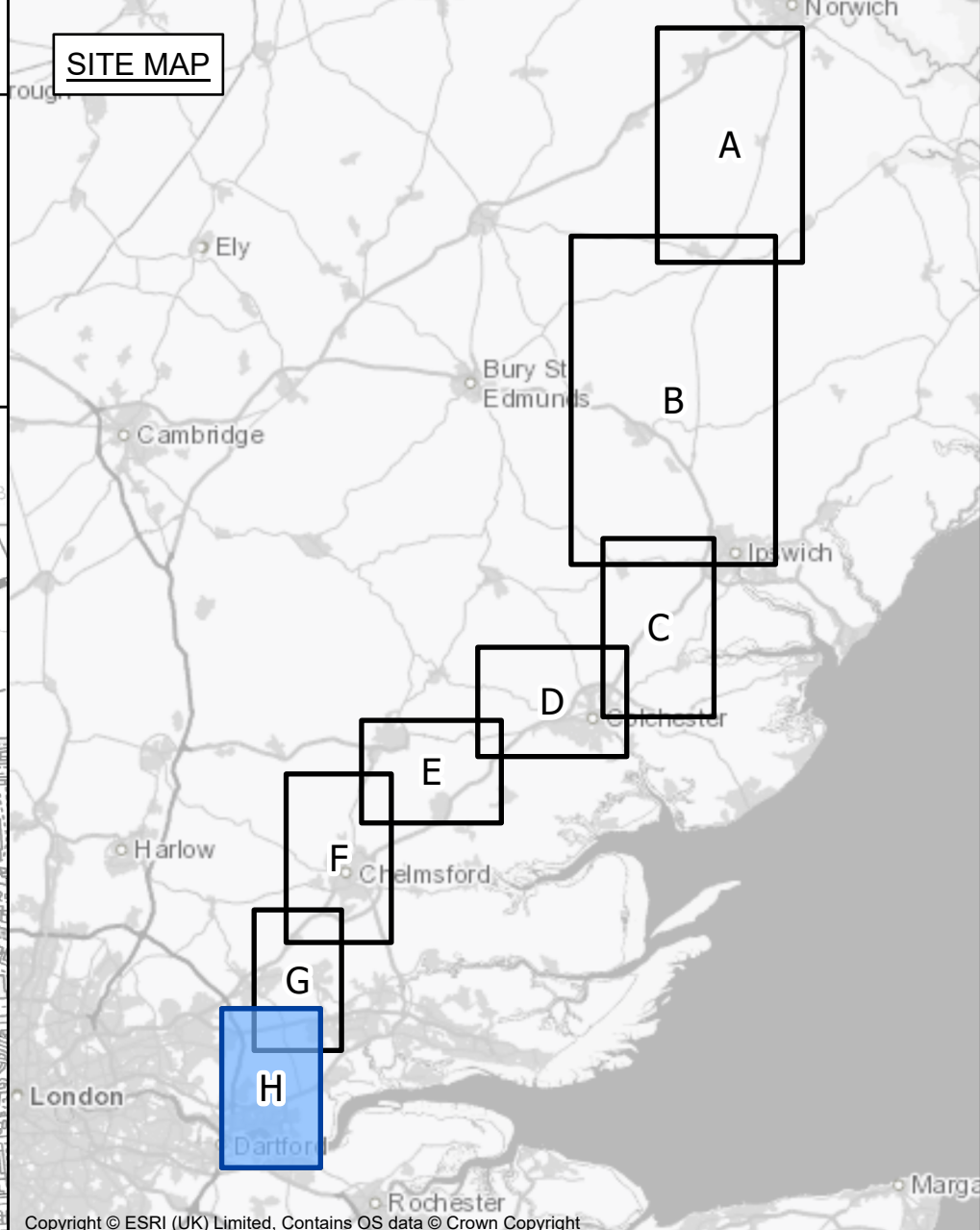
**Infrastructure Planning (Applications: Prescribed Forms and Procedure)
Regulations 2009 Regulation 5(2)(c)**

nationalgrid



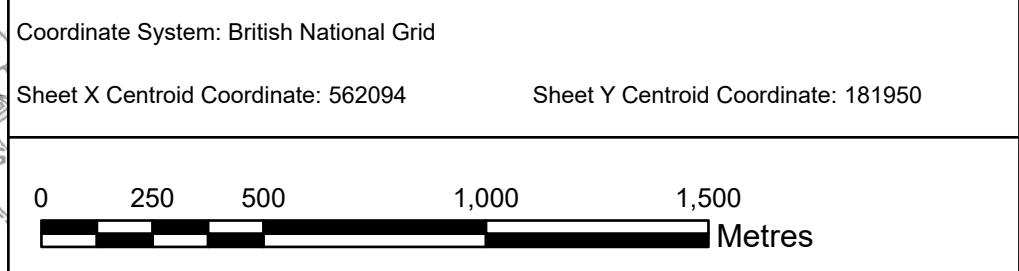
THE NATIONAL GRID (NORWICH TO TILBURY) ORDER
WORKS PLANS KEY PLAN
REGULATION 5(2)(j)
SECTION H (SHEET 1 OF 1,
BRENTWOOD BOROUGH COUNCIL, BASILDON BOROUGH COUNCIL AND THURROCK COUNCIL)

Application Document 2.3



- Legend**
- - Local authority boundary
 - - Section boundary & local authority boundary
 - - Section boundary
 - Sheet Index
 - Order Limits

- Notes**
1. These plans show the Order Limits and potential location for the works. Due to the need for future flexibility, National Grid will be applying for Order Limits and Limits of Deviation within its Development Consent Order, within which any final alignments would lie.
 2. For additional detail on the plan suites, please refer to the Guide to Plans (document reference 2.0), located in the Volume 2 of the DCO application.
 3. This drawing is scaled at paper size A0, therefore any prints taken at smaller sizes will affect accuracy of the measurement units and should not be scaled against.



BACKGROUND MAPPING INFORMATION HAS BEEN REPRODUCED FROM THE ORDNANCE SURVEY BY PERMISSION OF ORDNANCE SURVEY OF THE CONTROLLER OF HIS MAJESTY'S STATIONERY OFFICE. © CROWN COPYRIGHT AND DATABASE RIGHTS (2025) LICENCE OS100024241 AND AC0000807948.

B	MAY-2025	For deadline four	TMH	JPC	KR
A	AUG-2025	For DCO submission	MAB	JPC	KR
Issue	Date	Remarks	Drawn	Checked	Approved

Title

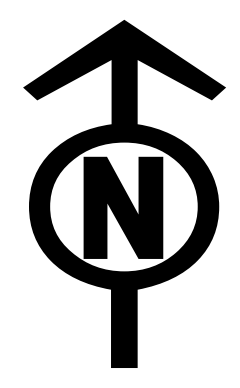
THE NATIONAL GRID (NORWICH TO TILBURY) ORDER
WORKS PLANS KEY PLAN
REGULATION 5(2)(j)
SECTION H (SHEET 1 OF 1,
BRENTWOOD BOROUGH COUNCIL,
BASILDON BOROUGH COUNCIL
AND THURROCK COUNCIL)

nationalgrid

PINS Application Number
EN020027

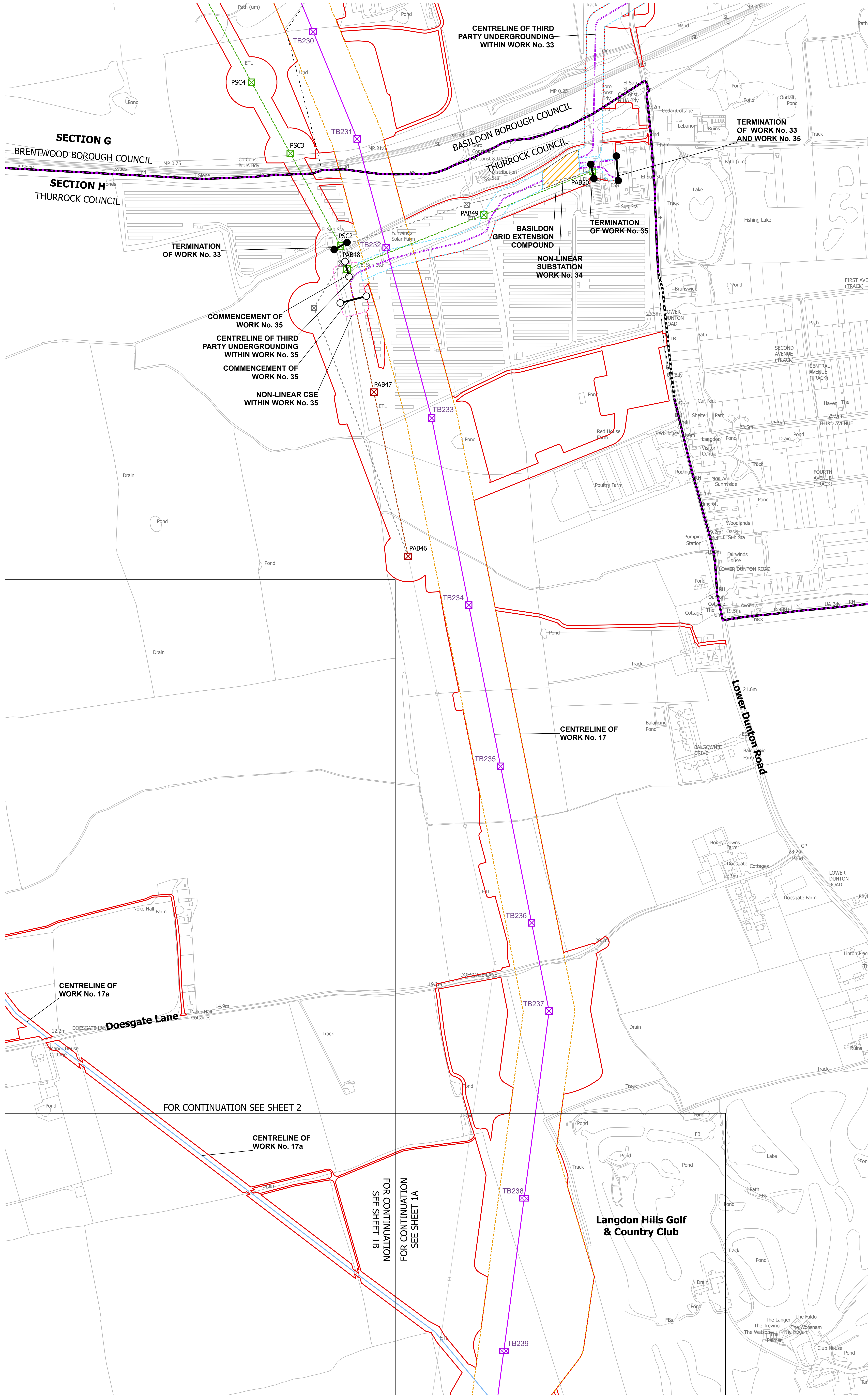
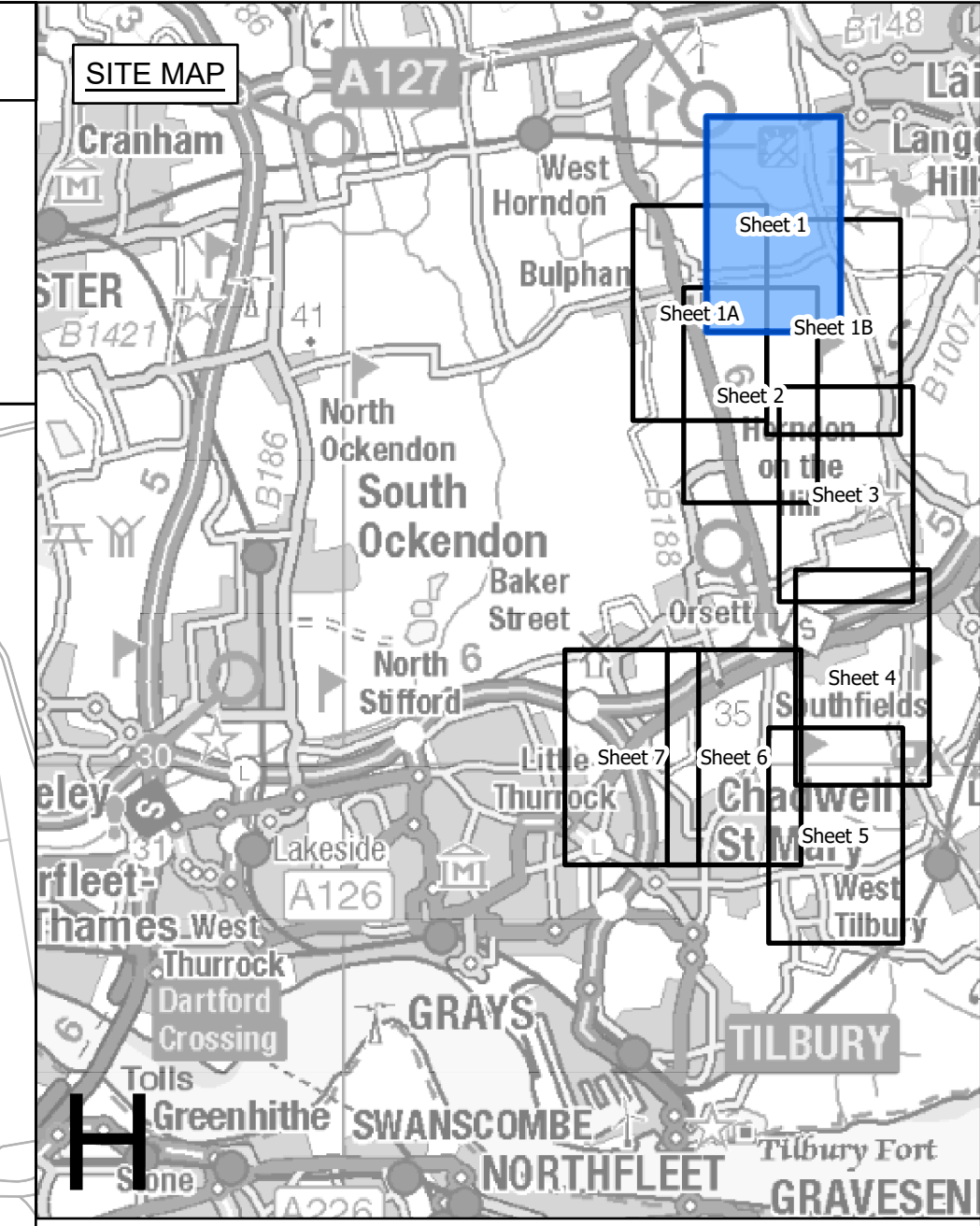
National Grid Drawing Reference
AENC-LSTC-ENG-DWG-0003

Scale	Sheet Size	Sheet	Issue
1:17,000	A0	SHEET 1 OF 1	B



THE NATIONAL GRID (NORWICH TO TILBURY) ORDER
WORKS PLANS
REGULATION 5(2)(j)
SECTION H (SHEET 1 OF 7,
BRENTWOOD BOROUGH COUNCIL, BASILDON BOROUGH COUNCIL AND THURROCK COUNCIL)

Application Document 2.3



Legend

- - Local authority boundary
- - Section boundary & local authority boundary
- - Section boundary
- - Sheet index cutlines
- Commencement of work
- Termination of work
- Termination and commencement of work
- Order Limits
- Limits of deviation: overhead lines
- Limits of deviation: temporary overhead lines
- Limits of deviation: underground cables
- Limits of deviation: non-linear works
- Proposed full line tension gantry (not to scale)
- Proposed lattice pylons (not to scale)
- Proposed low height lattice pylons (not to scale)
- Proposed pylon removal (not to scale)
- Proposed pylon modification (not to scale)
- Proposed temporary pylon (angle structures only) (not to scale)
- Proposed temporary structure (not to scale)
- Proposed overhead line
- Proposed underground cable centreline
- Proposed removal of overhead line
- Proposed modification to overhead line
- Proposed temporary overhead line
- Third party overhead line to be removed
- Third party existing overhead line (modified)
- Third party proposed overhead line
- Third party temporary overhead line diversion
- Third party proposed underground cable centreline
- Proposed substation or proposed substation extension
- Centreline of Work No. 17a

- Notes**
- These plans show the Order Limits and potential location for the works. Due to the need for future flexibility, National Grid will be applying for Order Limits and Limits of Deviation within its Development Consent Order, within which any final alignments would lie.
 - For additional detail on the plan suites, please refer to the Guide to Plans (document reference 2.0), located in the Volume 2 of the DCO application.
 - This drawing is scaled at paper size A0, therefore any prints taken at smaller sizes will affect accuracy of the measurement units and should not be scaled against.

Coordinate System: British National Grid
Sheet X Centroid Coordinate: 565485 Sheet Y Centroid Coordinate: 196862

BACKGROUND MAPPING INFORMATION HAS BEEN REPRODUCED FROM THE ORDNANCE SURVEY BY PERMISSION OF ORDNANCE SURVEY OF THE CONTROLLER OF HIS MAJESTY'S STATIONERY OFFICE. © CROWN COPYRIGHT AND DATABASE RIGHTS (2025) LICENCE OS100024241 AND AC0000807948.

Issue	Date	Remarks	Drawn	Checked	Approved
B	MAY-2026	For deadline four	TMH	JPC	KR
A	AUG-2025	For DCO submission	MAB	JPC	KR

Title
THE NATIONAL GRID (NORWICH TO TILBURY) ORDER
WORKS PLANS
REGULATION 5(2)(j)
SECTION H (SHEET 1 OF 7,
BRENTWOOD BOROUGH COUNCIL,
BASILDON BOROUGH COUNCIL
AND THURROCK COUNCIL)

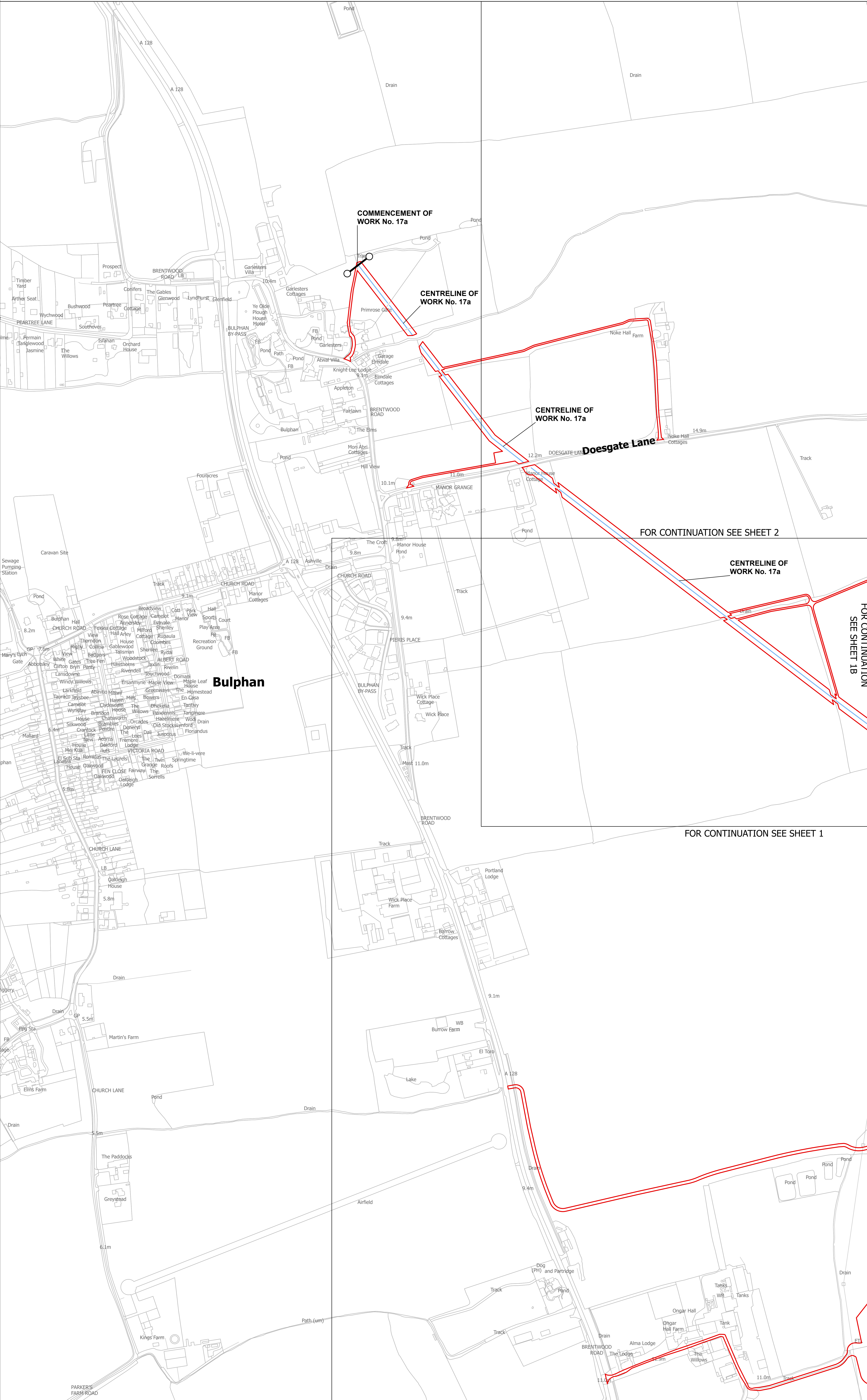
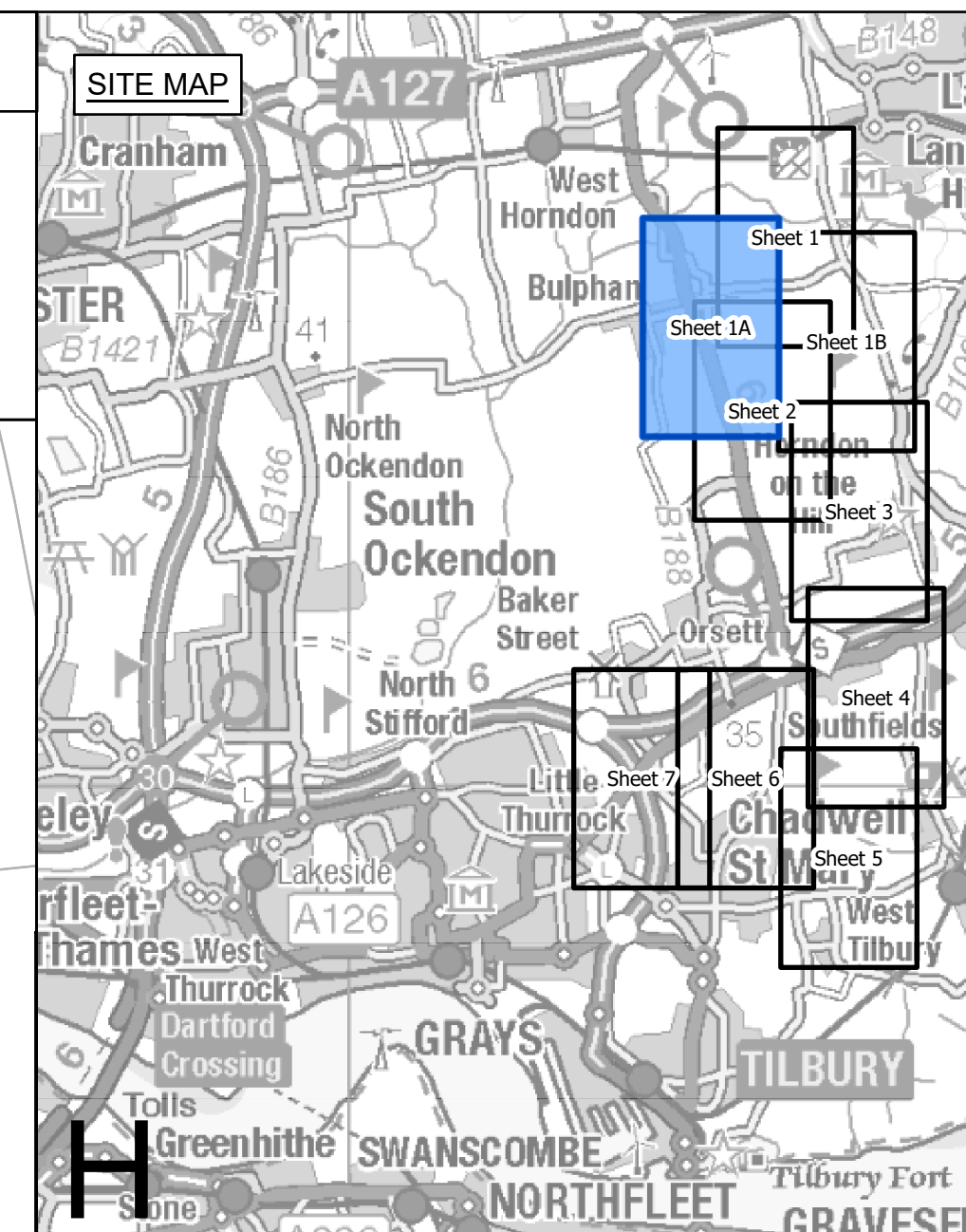
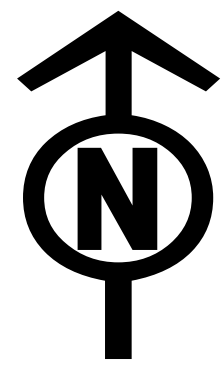
nationalgrid

PINS Application Number
EN020027

National Grid Drawing Reference
AENC-LSTC-ENG-DWG-0003

Scale	Sheet Size	Sheet	Issue
1:2,500	A0	SHEET 1 OF 7	B

THE NATIONAL GRID (NORWICH TO TILBURY) ORDER
WORKS PLANS
REGULATION 5(2)(j)
SECTION H (SHEET 1A OF 7,
THURROCK COUNCIL)



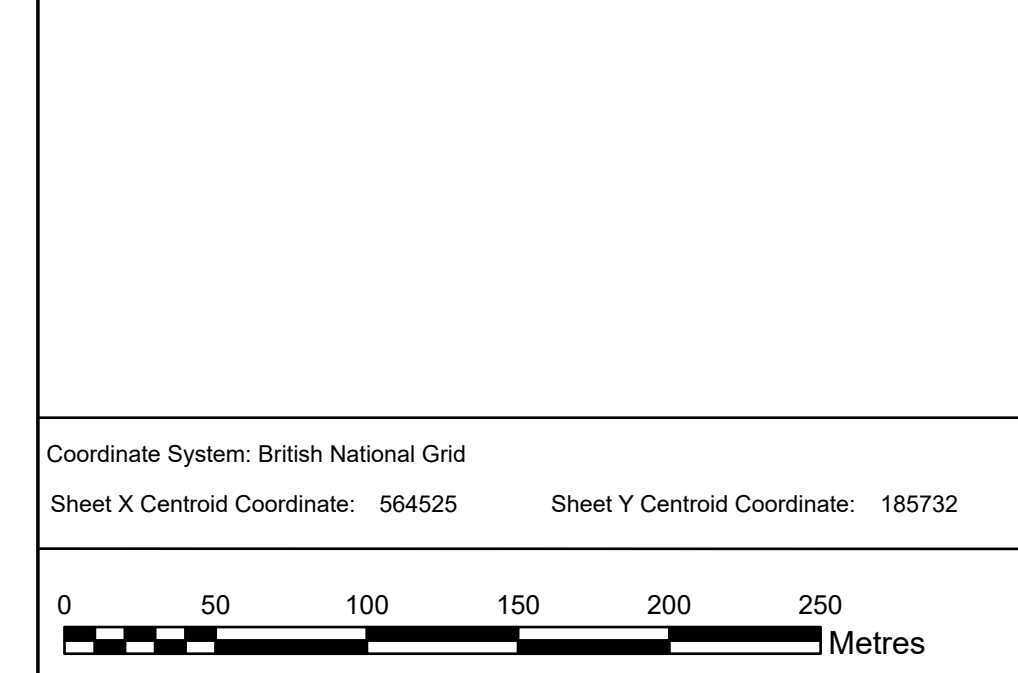
- Legend**
- - Local authority boundary
 - Section boundary & local authority boundary
 - Section boundary
 - Sheet index cutlines
 - Commencement of work
 - Termination of work
 - Termination and commencement of work
 - Order Limits
 - Limits of deviation: overhead lines
 - Limits of deviation: temporary overhead lines
 - Limits of deviation: underground cables
 - Limits of deviation: non-linear works
 - Proposed full line tension gantry (not to scale)
 - Proposed lattice pylons (not to scale)
 - Proposed low height lattice pylons (not to scale)
 - Proposed pylon removal (not to scale)
 - Proposed pylon modification (not to scale)
 - Proposed temporary pylon (angle structures only) (not to scale)
 - Proposed temporary structure (not to scale)
 - Proposed overhead line
 - Proposed underground cable centreline
 - Proposed removal of overhead line
 - Proposed modification to overhead line
 - Proposed temporary overhead line
 - Third party overhead line to be removed
 - Third party existing overhead line (modified)
 - Third party proposed overhead line
 - Third party temporary overhead line diversion
 - Third party proposed underground cable centreline
 - Proposed substation or proposed substation extension
 - Centreline of Work No. 17a

FOR CONTINUATION SEE SHEET 2

FOR CONTINUATION SEE SHEET 1B

FOR CONTINUATION SEE SHEET 1

- Notes**
- These plans show the Order Limits and potential location for the works. Due to the need for future flexibility, National Grid will be applying for Order Limits and Limits of Deviation within its Development Consent Order, within which any final alignments would lie.
 - For additional detail on the plan suites, please refer to the Guide to Plans (document reference 2.0), located in the Volume 2 of the DCO application.
 - This drawing is scaled at paper size A0, therefore any prints taken at smaller sizes will affect accuracy of the measurement units and should not be scaled against.



BACKGROUND MAPPING INFORMATION HAS BEEN REPRODUCED FROM THE ORDNANCE SURVEY BY PERMISSION OF ORDNANCE SURVEY OF THE CONTROLLER OF HIS MAJESTY'S STATIONERY OFFICE. © CROWN COPYRIGHT AND DATABASE RIGHTS (2025) LICENCE OS100024241 AND AC0000807948.

Issue	Date	Remarks	Drawn	Checked	Approved
B	MAY-2026	For deadline four	TMH	JPC	KR
A	AUG-2025	For DCO submission	MAB	JPC	KR

Title

THE NATIONAL GRID
(NORWICH TO TILBURY) ORDER
WORKS PLANS
REGULATION 5(2)(j)
SECTION H (SHEET 1A OF 7,
THURROCK COUNCIL)

nationalgrid

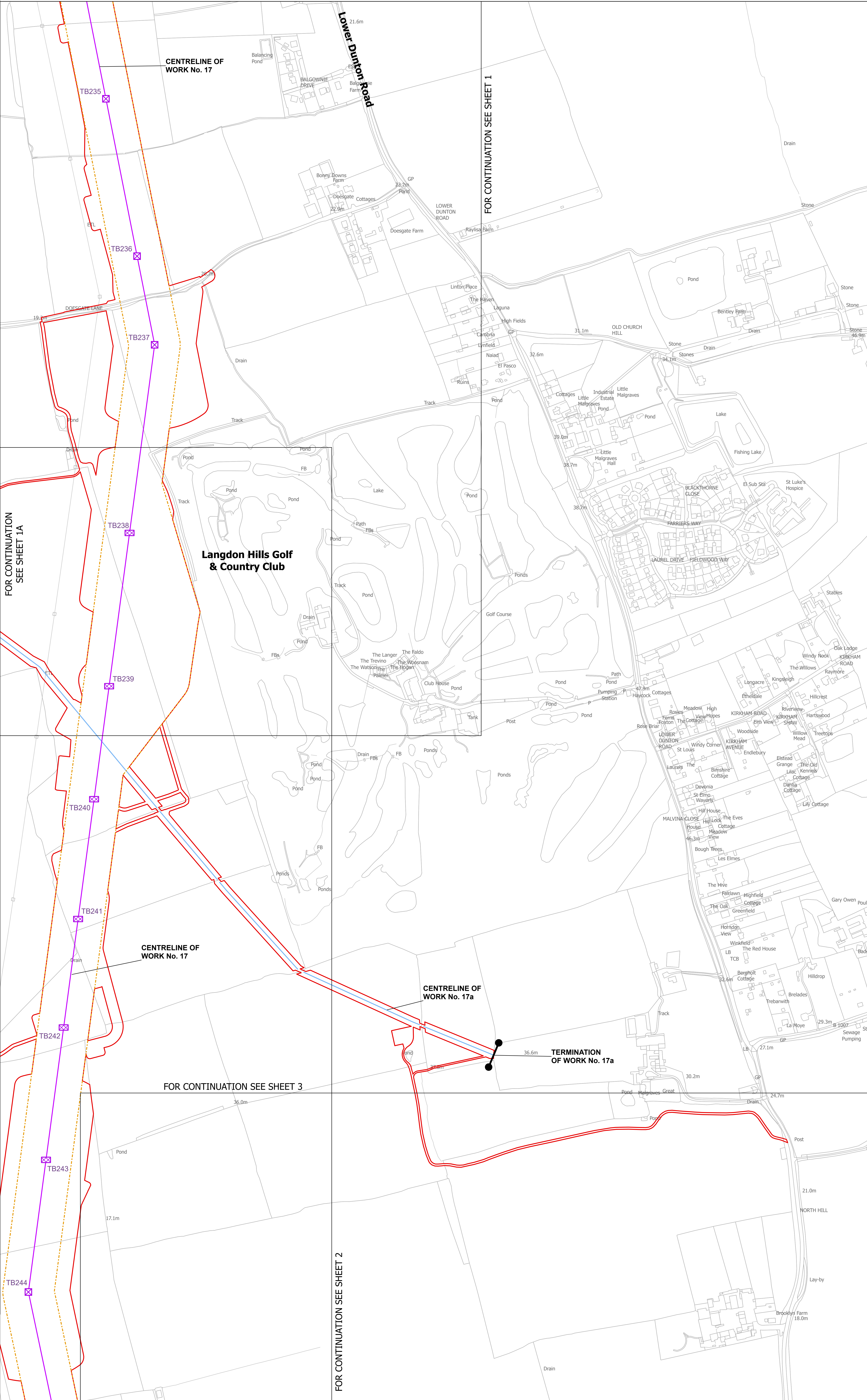
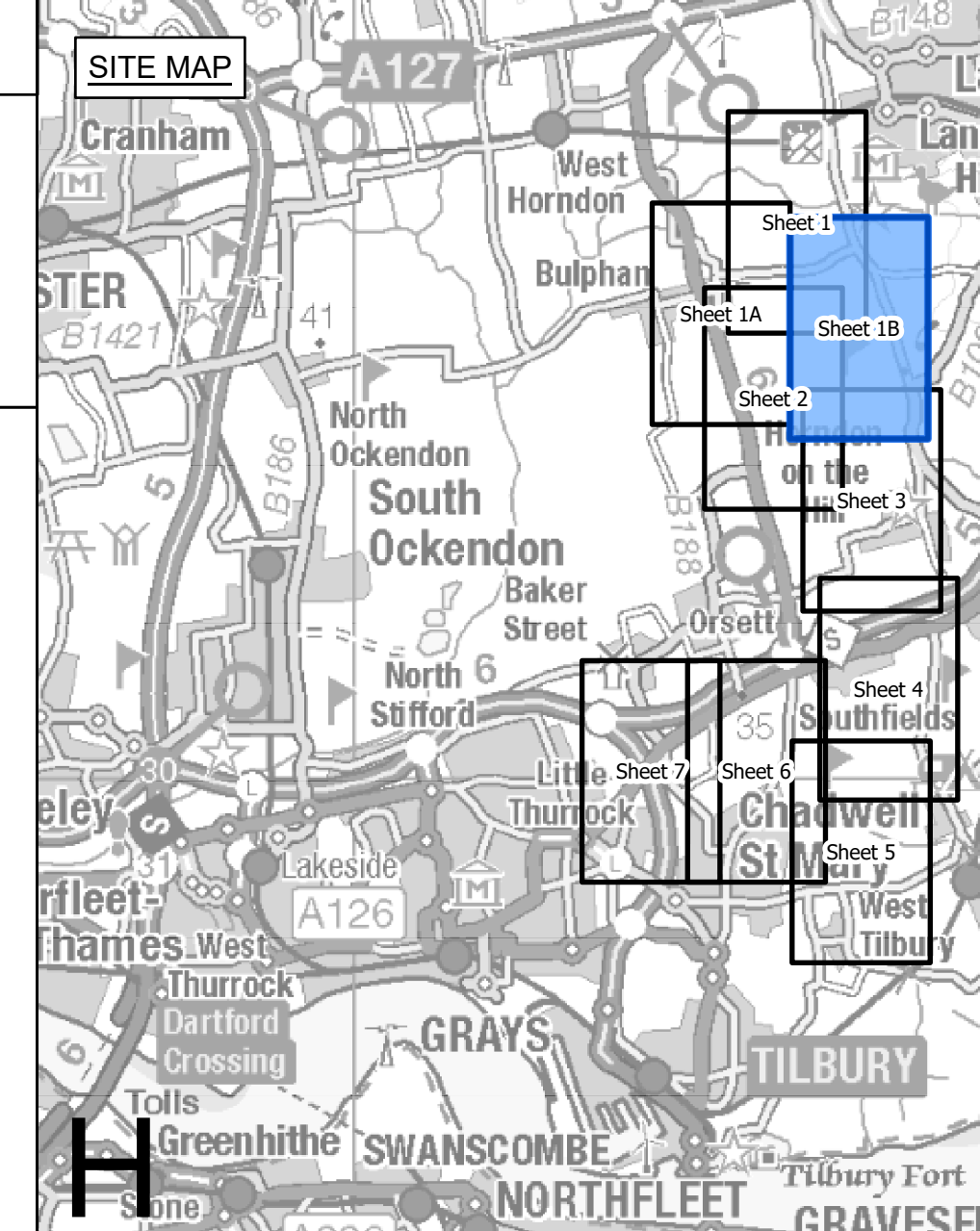
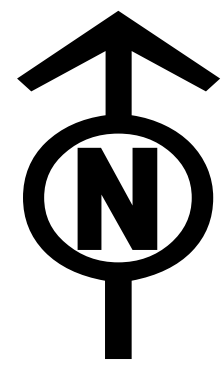
PINS Application Number
EN020027

National Grid Drawing Reference
AENC-LSTC-ENG-DWG-0003

Scale	Sheet Size	Sheet	Issue
1:2,500	A0	SHEET 1A OF 7	B

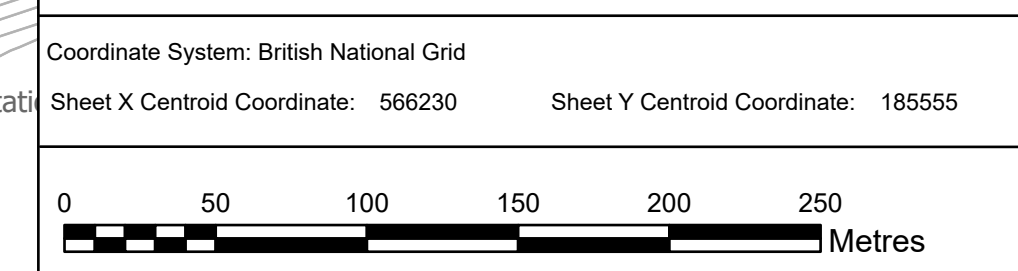
THE NATIONAL GRID (NORWICH TO TILBURY) ORDER
WORKS PLANS
REGULATION 5(2)(j)
SECTION H (SHEET 1B OF 7,
THURROCK COUNCIL)

Application Document 2.3



- Legend**
- - Local authority boundary
 - Section boundary & local authority boundary
 - Section boundary
 - Sheet index cutlines
 - Commencement of work
 - Termination of work
 - Termination and commencement of work
 - Order Limits
 - Limits of deviation: overhead lines
 - Limits of deviation: temporary overhead lines
 - Limits of deviation: underground cables
 - Limits of deviation: non-linear works
 - ⊗ Proposed full line tension gantry (not to scale)
 - ⊗ Proposed lattice pylons (not to scale)
 - ⊗ Proposed low height lattice pylons (not to scale)
 - ⊗ Proposed pylon removal (not to scale)
 - ⊗ Proposed pylon modification (not to scale)
 - ⊗ Proposed temporary pylon (angle structures only) (not to scale)
 - ⊗ Proposed temporary structure (not to scale)
 - Proposed overhead line
 - Proposed underground cable centreline
 - Proposed removal of overhead line
 - Proposed modification to overhead line
 - Proposed temporary overhead line
 - Third party overhead line to be removed
 - Third party existing overhead line (modified)
 - Third party proposed overhead line
 - Third party temporary overhead line diversion
 - Third party proposed underground cable centreline
 - Proposed substation or proposed substation extension
 - Centreline of Work No. 17a

- Notes**
1. These plans show the Order Limits and potential location for the works. Due to the need for future flexibility, National Grid will be applying for Order Limits and Limits of Deviation within its Development Consent Order, within which any final alignments would lie.
 2. For additional detail on the plan suites, please refer to the Guide to Plans (document reference 2.0), located in the Volume 2 of the DCO application.
 3. This drawing is scaled at paper size A0, therefore any prints taken at smaller sizes will affect accuracy of the measurement units and should not be scaled against.



BACKGROUND MAPPING INFORMATION HAS BEEN REPRODUCED FROM THE ORDNANCE SURVEY BY PERMISSION OF ORDNANCE SURVEY OF THE CONTROLLER OF HIS MAJESTY'S STATIONERY OFFICE. © CROWN COPYRIGHT AND DATABASE RIGHTS (2025) LICENCE OS100024241 AND AC0000807948.

B	MAY-2026	For deadline four	TMH	JPC	KR
A	AUG-2025	For DCO submission	MAB	JPC	KR

Issue	Date	Remarks	Drawn	Checked	Approved

Title

THE NATIONAL GRID
(NORWICH TO TILBURY) ORDER
WORKS PLANS
REGULATION 5(2)(j)
SECTION H (SHEET 1B OF 7,
THURROCK COUNCIL)

nationalgrid

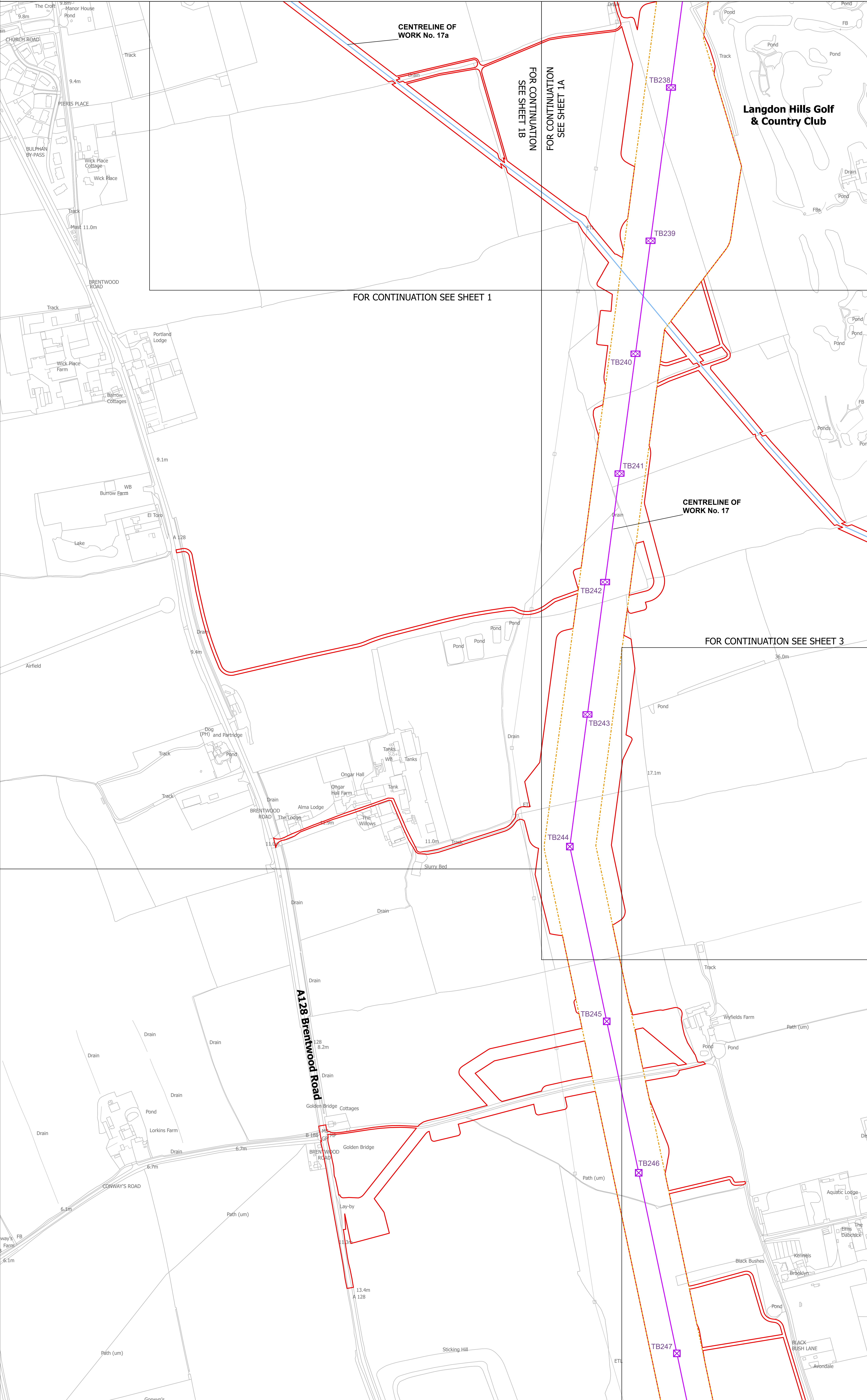
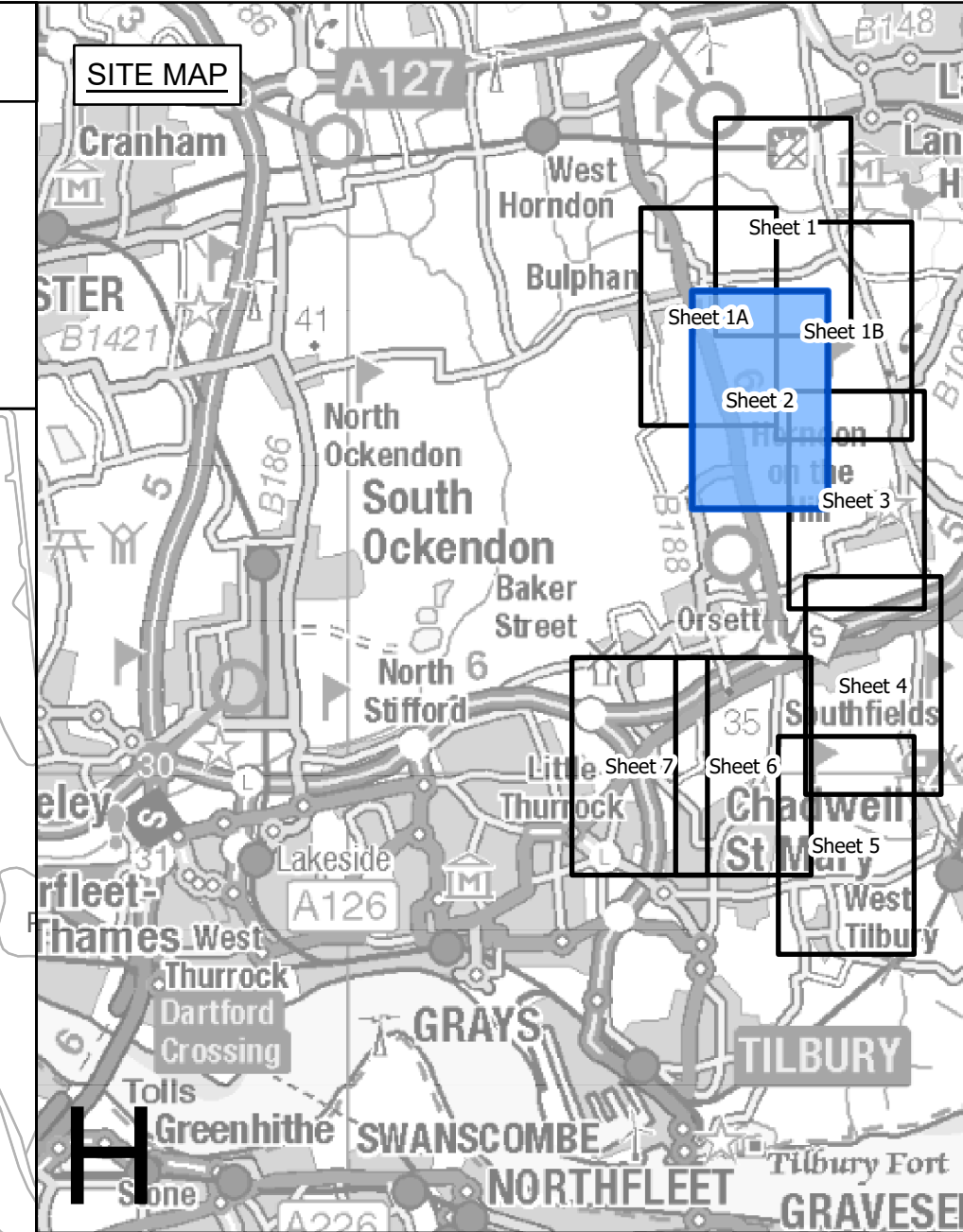
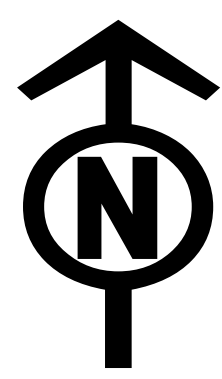
PINS Application Number
EN020027

National Grid Drawing Reference
AENC-LSTC-ENG-DWG-0003

Scale	Sheet Size	Sheet	Issue
1:2,500	A0	SHEET 1B OF 7	B

THE NATIONAL GRID (NORWICH TO TILBURY) ORDER
WORKS PLANS
REGULATION 5(2)(j)
SECTION H (SHEET 2 OF 7,
THURROCK COUNCIL)

Application Document 2.3



Legend

- - Local authority boundary
- Section boundary & local authority boundary
- Section boundary
- Sheet index cutlines
- Commencement of work
- Termination of work
- Termination and commencement of work
- Order Limits
- Limits of deviation: overhead lines
- Limits of deviation: temporary overhead lines
- Limits of deviation: underground cables
- Limits of deviation: non-linear works
- Proposed full line tension gantry (not to scale)
- Proposed lattice pylons (not to scale)
- Proposed low height lattice pylons (not to scale)
- Proposed pylon removal (not to scale)
- Proposed pylon modification (not to scale)
- Proposed temporary pylon (angle structures only) (not to scale)
- Proposed temporary structure (not to scale)
- Proposed overhead line
- Proposed underground cable centreline
- Proposed removal of overhead line
- Proposed modification to overhead line
- Proposed temporary overhead line
- Third party overhead line to be removed
- Third party existing overhead line (modified)
- Third party proposed overhead line
- Third party temporary overhead line diversion
- Third party proposed underground cable centreline
- Proposed substation or proposed substation extension
- Centreline of Work No. 17a

Notes

- These plans show the Order Limits and potential location for the works. Due to the need for future flexibility, National Grid will be applying for Order Limits and Limits of Deviation within its Development Consent Order, within which any final alignments would lie.
- For additional detail on the plan suites, please refer to the Guide to Plans (document reference 2.0), located in the Volume 2 of the DCO application.
- This drawing is scaled at paper size A0, therefore any prints taken at smaller sizes will affect accuracy of the measurement units and should not be scaled against.

Coordinates System: British National Grid
Sheet X Centroid Coordinate: 565173 Sheet Y Centroid Coordinate: 184685

0 50 100 150 200 250 Metres

BACKGROUND MAPPING INFORMATION HAS BEEN REPRODUCED FROM THE ORDNANCE SURVEY BY PERMISSION OF ORDNANCE SURVEY OF THE CONTROLLER OF HIS MAJESTY'S STATIONERY OFFICE. © CROWN COPYRIGHT AND DATABASE RIGHTS (2025) LICENCE OS100024241 AND AC0000807948.

Issue	Date	Remarks	Drawn	Checked	Approved
B	MAY-2026	For deadline four	TMH	JPC	KR
A	AUG-2025	For DCO submission	MAB	JPC	KR

Title

THE NATIONAL GRID (NORWICH TO TILBURY) ORDER
WORKS PLANS
REGULATION 5(2)(j)
SECTION H (SHEET 2 OF 7,
THURROCK COUNCIL)

nationalgrid

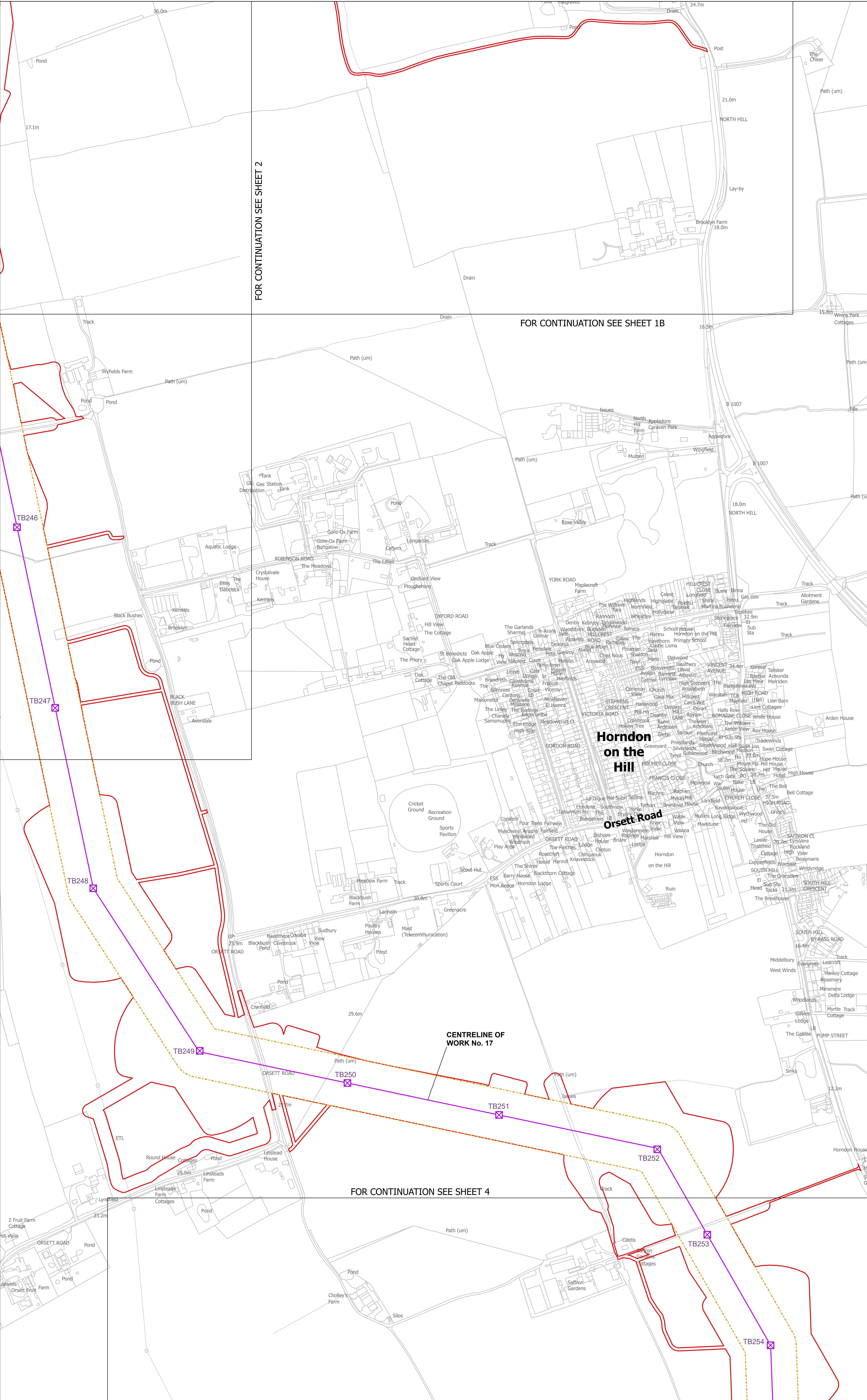
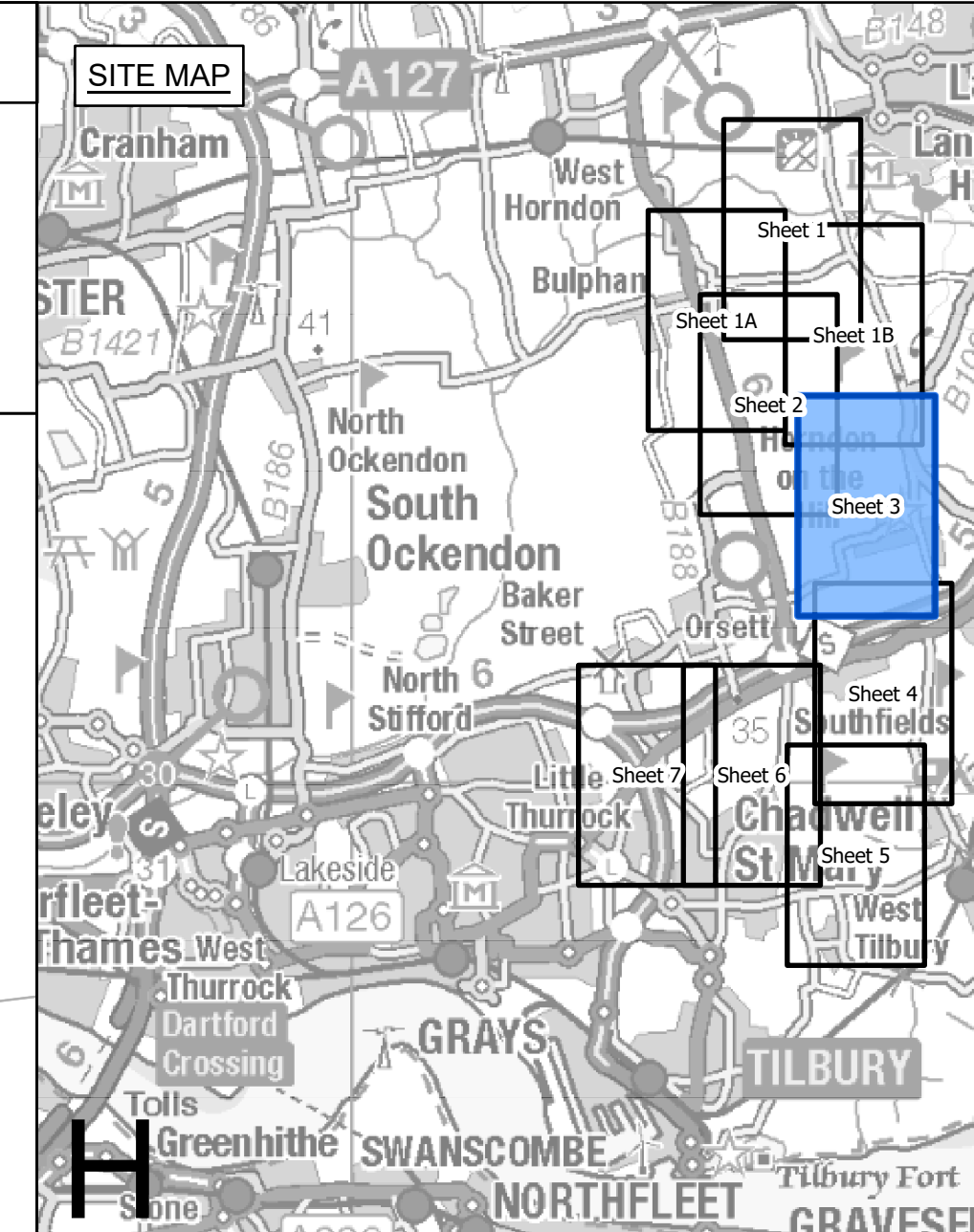
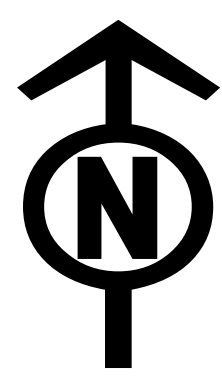
PINS Application Number
EN020027

National Grid Drawing Reference
AENC-LSTC-ENG-DWG-0003

Scale	Sheet Size	Sheet	Issue
1:2,500	A0	SHEET 2 OF 7	B

THE NATIONAL GRID (NORWICH TO TILBURY) ORDER
WORKS PLANS
REGULATION 5(2)(j)
SECTION H (SHEET 3 OF 7,
THURROCK COUNCIL)

Application Document 2.3



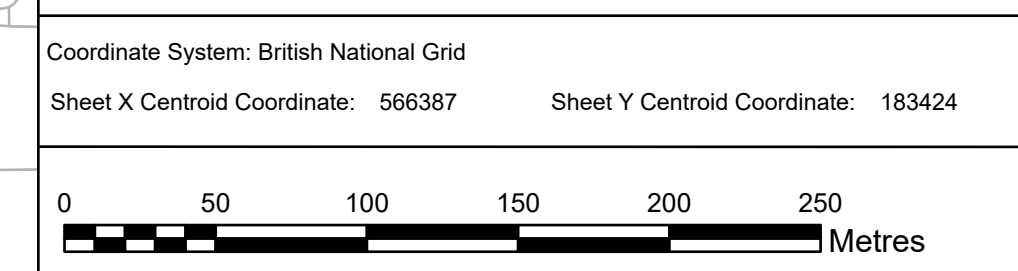
FOR CONTINUATION SEE SHEET 2

FOR CONTINUATION SEE SHEET 1B

FOR CONTINUATION SEE SHEET 4

- Legend**
- - Local authority boundary
 - ▬ Section boundary & local authority boundary
 - ▬ Section boundary
 - Sheet index cutlines
 - Commencement of work
 - Termination of work
 - Termination and commencement of work
 - ▭ Order Limits
 - ▭ Limits of deviation: overhead lines
 - ▭ Limits of deviation: temporary overhead lines
 - ▭ Limits of deviation: underground cables
 - ▭ Limits of deviation: non-linear works
 - ▭ Proposed full line tension gantry (not to scale)
 - ▭ Proposed lattice pylons (not to scale)
 - ▭ Proposed low height lattice pylons (not to scale)
 - ▭ Proposed pylon removal (not to scale)
 - ▭ Proposed pylon modification (not to scale)
 - ▭ Proposed temporary pylon (angle structures only) (not to scale)
 - ▭ Proposed temporary structure (not to scale)
 - ▭ Proposed overhead line
 - ▭ Proposed underground cable centreline
 - ▭ Proposed removal of overhead line
 - ▭ Proposed modification to overhead line
 - ▭ Proposed temporary overhead line
 - ▭ Third party overhead line to be removed
 - ▭ Third party existing overhead line (modified)
 - ▭ Third party proposed overhead line
 - ▭ Third party temporary overhead line diversion
 - ▭ Third party proposed underground cable centreline
 - ▭ Proposed substation or proposed substation extension
 - ▭ Centreline of Work No. 17a

- Notes**
- These plans show the Order Limits and potential location for the works. Due to the need for future flexibility, National Grid will be applying for Order Limits and Limits of Deviation within its Development Consent Order, within which any final alignments will lie.
 - For additional detail on the plan suites, please refer to the Guide to Plans (document reference 2.0), located in the Volume 2 of the DCO application.
 - This drawing is scaled at paper size A0, therefore any prints taken at smaller sizes will affect accuracy of the measurement units and should not be scaled against.



BACKGROUND MAPPING INFORMATION HAS BEEN REPRODUCED FROM THE ORDNANCE SURVEY BY PERMISSION OF ORDNANCE SURVEY OF THE CONTROLLER OF HIS MAJESTY'S STATIONERY OFFICE. © CROWN COPYRIGHT AND DATABASE RIGHTS (2025) LICENCE OS100024241 AND AC000089748.

Issue	Date	Remarks	Drawn	Checked	Approved
B	MAY-2025	For deadline four	TMH	JPC	KR
A	AUG-2025	For DCO submission	MAB	JPC	KR

Title

THE NATIONAL GRID (NORWICH TO TILBURY) ORDER
WORKS PLANS
REGULATION 5(2)(j)
SECTION H (SHEET 3 OF 7,
THURROCK COUNCIL)

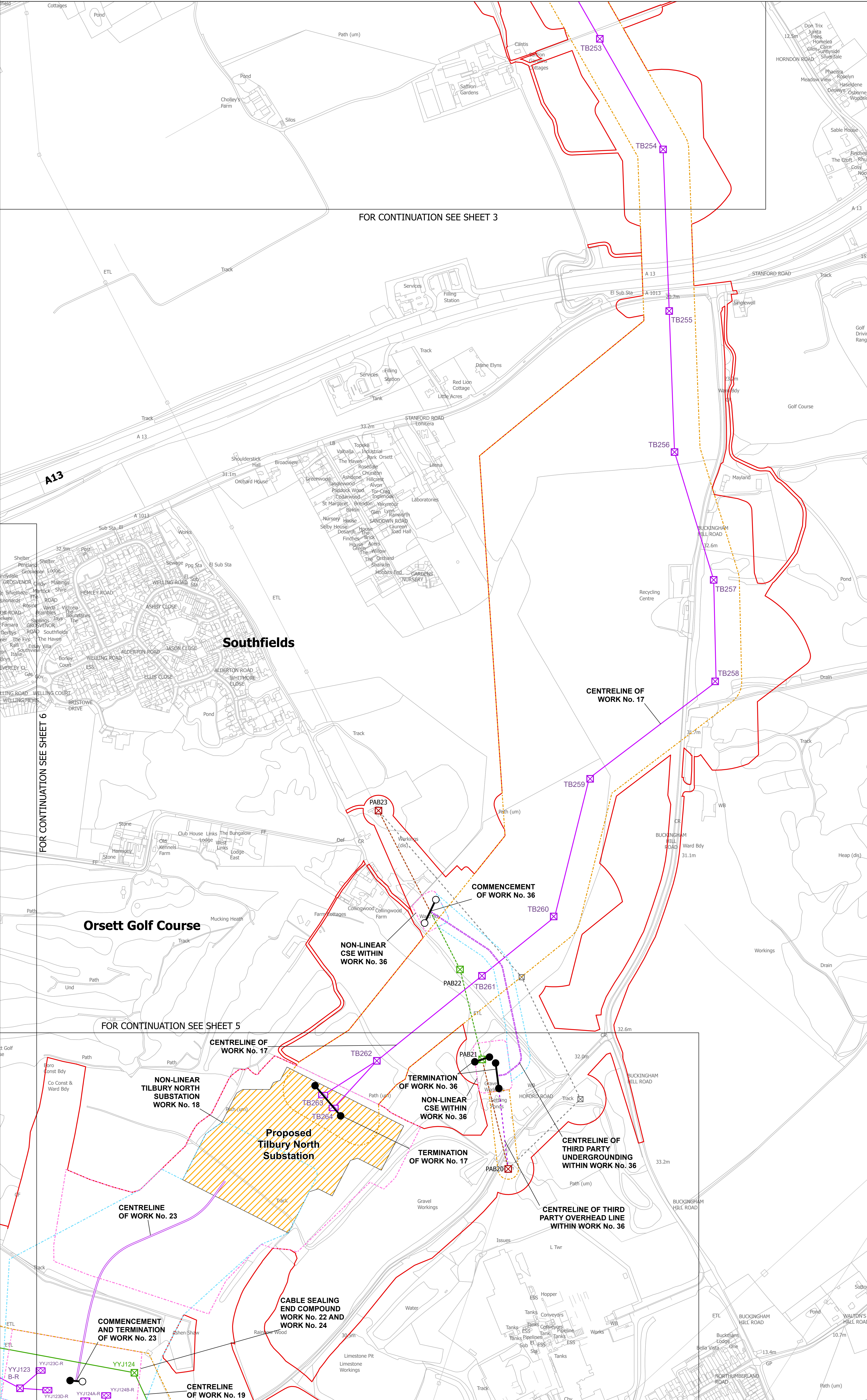
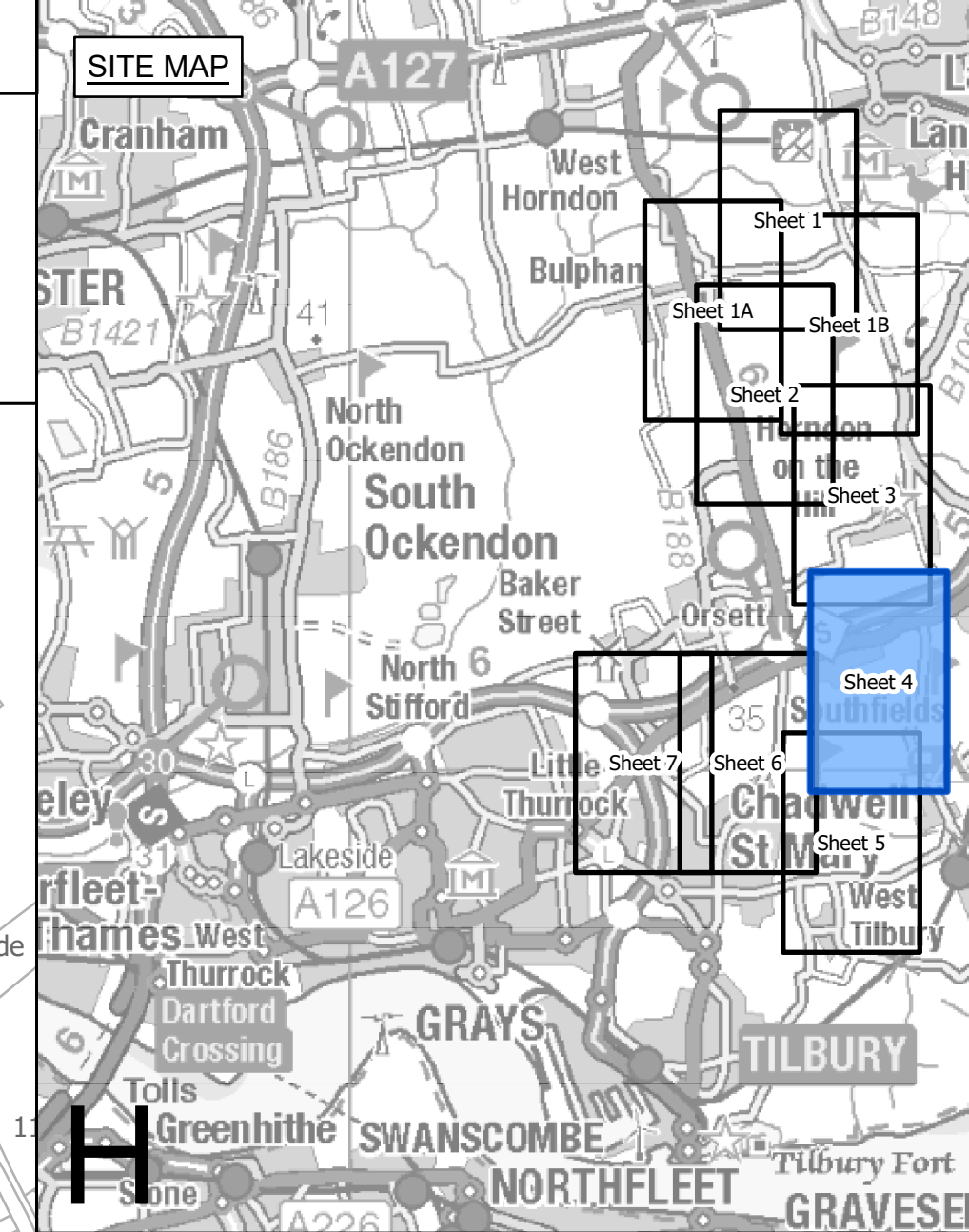
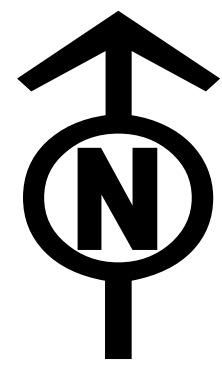
nationalgrid

PINS Application Number
EN020027

National Grid Drawing Reference
AENC-LSTC-ENG-DWG-0003

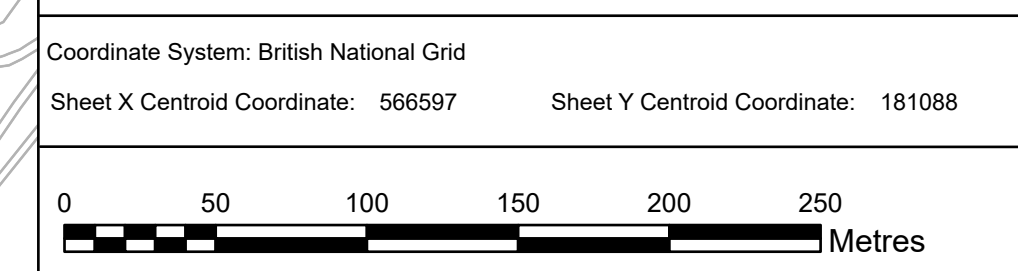
Scale	Sheet Size	Sheet	Issue
1:2,500	A0	SHEET 3 OF 7	B

THE NATIONAL GRID (NORWICH TO TILBURY) ORDER
WORKS PLANS
REGULATION 5(2)(j)
SECTION H (SHEET 4 OF 7,
THURROCK COUNCIL)



- Legend**
- Local authority boundary
 - Section boundary & local authority boundary
 - Section boundary
 - Sheet index cutlines
 - Commencement of work
 - Termination of work
 - Termination and commencement of work
 - Order Limits
 - Limits of deviation: overhead lines
 - Limits of deviation: temporary overhead lines
 - Limits of deviation: underground cables
 - Limits of deviation: non-linear works
 - Proposed full line tension gantry (not to scale)
 - Proposed lattice pylons (not to scale)
 - Proposed low height lattice pylons (not to scale)
 - Proposed pylon removal (not to scale)
 - Proposed pylon modification (not to scale)
 - Proposed temporary pylon (angle structures only) (not to scale)
 - Proposed temporary structure (not to scale)
 - Proposed overhead line
 - Proposed underground cable centreline
 - Proposed removal of overhead line
 - Proposed modification to overhead line
 - Proposed temporary overhead line
 - Third party overhead line to be removed
 - Third party existing overhead line (modified)
 - Third party proposed overhead line
 - Third party temporary overhead line diversion
 - Third party proposed underground cable centreline
 - Proposed substation or proposed substation extension
 - Centreline of Work No. 17a

- Notes**
1. These plans show the Order Limits and potential location for the works. Due to the need for future flexibility, National Grid will be applying for Order Limits and Limits of Deviation within its Development Consent Order, within which any final alignments would lie.
 2. For additional detail on the plan suites, please refer to the Guide to Plans (document reference 2.0), located in the Volume 2 of the DCO application.
 3. This drawing is scaled at paper size A0, therefore any prints taken at smaller sizes will affect accuracy of the measurement units and should not be scaled against.



BACKGROUND MAPPING INFORMATION HAS BEEN REPRODUCED FROM THE ORDNANCE SURVEY BY PERMISSION OF ORDNANCE SURVEY OF THE CONTROLLER OF HIS MAJESTY'S STATIONERY OFFICE. © CROWN COPYRIGHT AND DATABASE RIGHTS (2025) LICENCE OS100024241 AND AC0000807948.

Issue	Date	Remarks	Drawn	Checked	Approved
B	MAY-2026	For deadline four	TMH	JPC	KR
A	AUG-2025	For DCO submission	MAB	JPC	KR

Title

THE NATIONAL GRID
(NORWICH TO TILBURY) ORDER
WORKS PLANS
REGULATION 5(2)(j)
SECTION H (SHEET 4 OF 7,
THURROCK COUNCIL)

nationalgrid

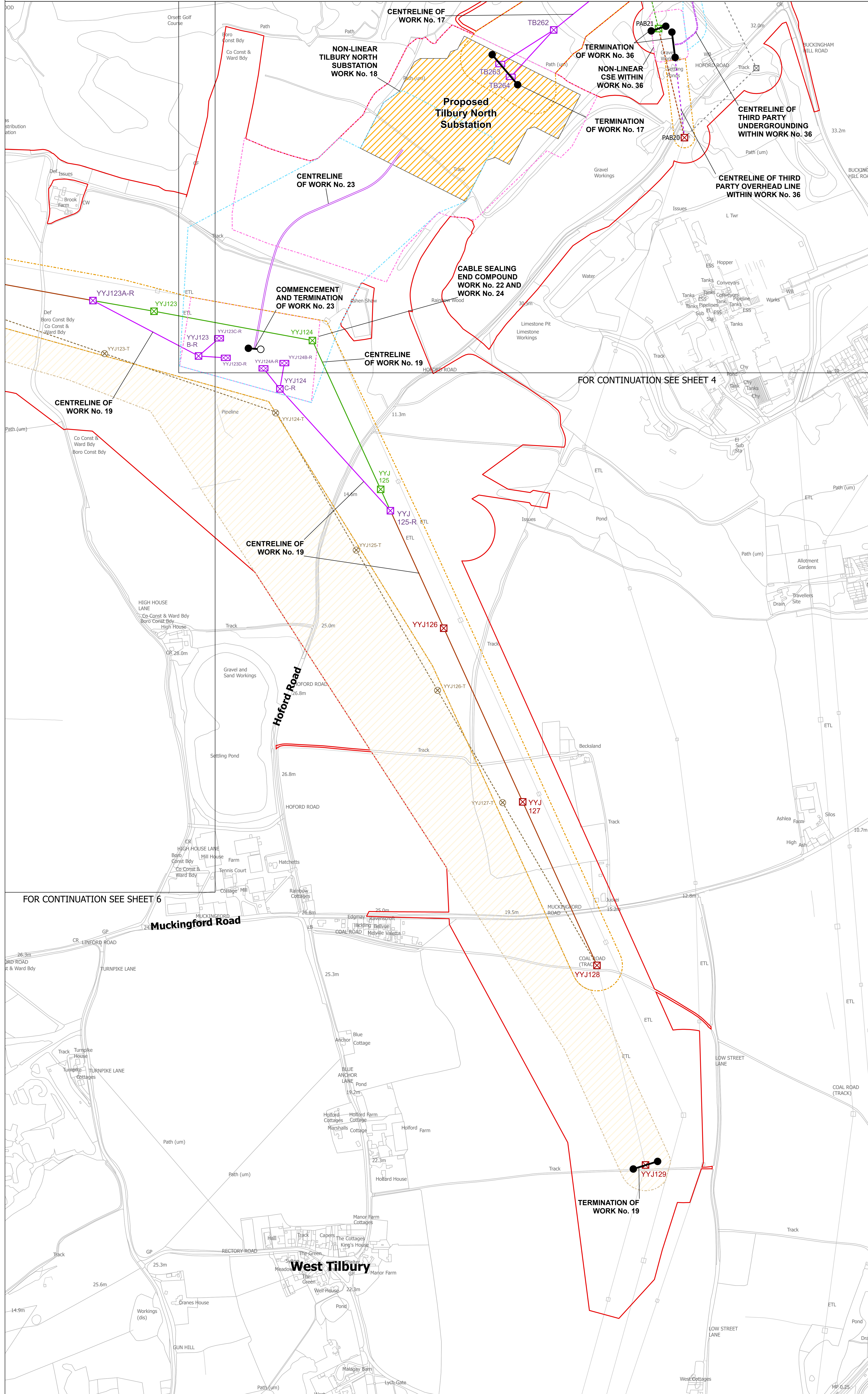
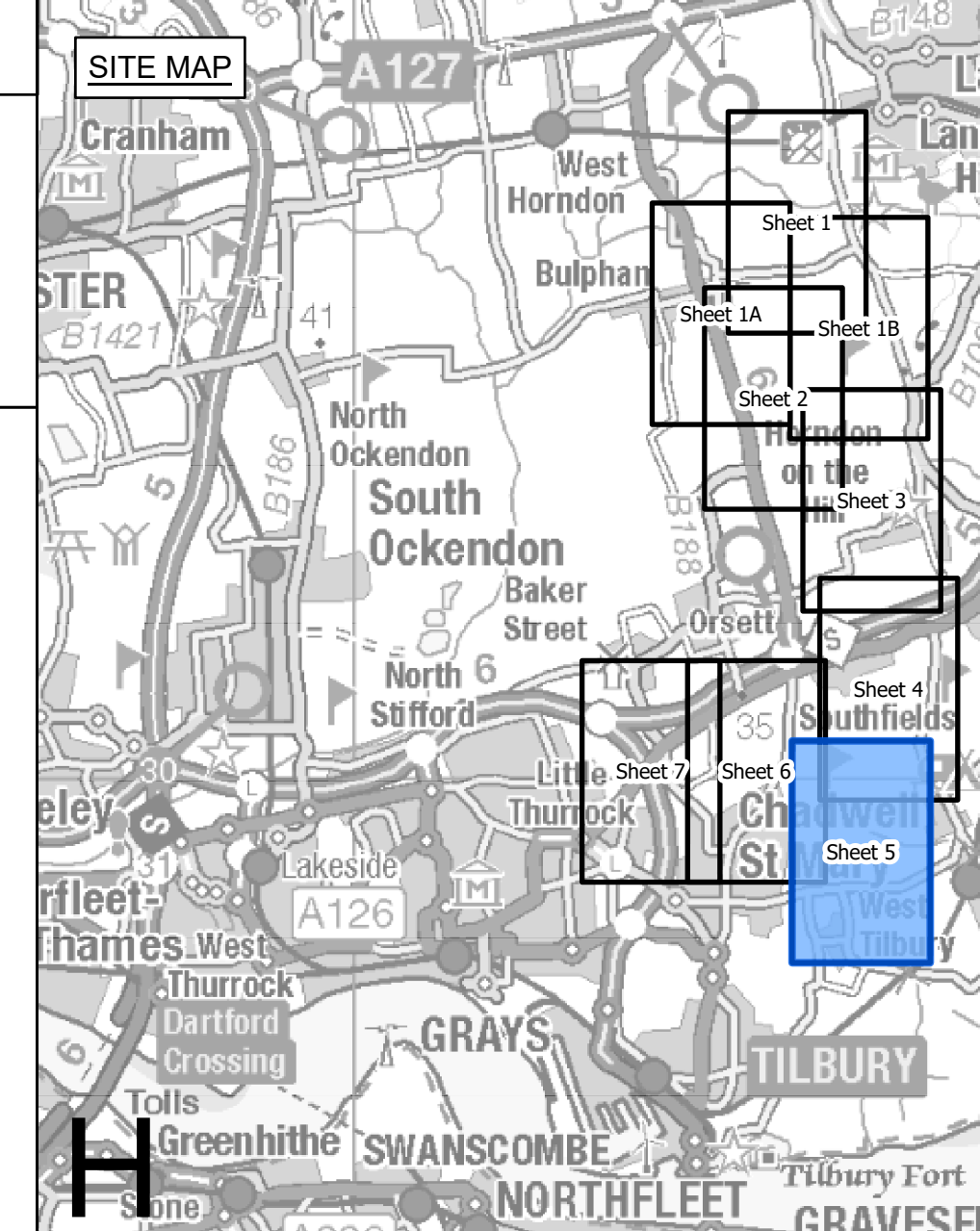
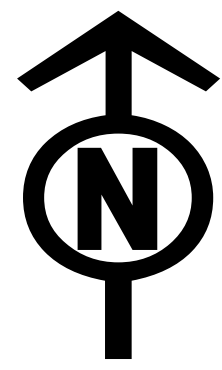
PINS Application Number
EN020027

National Grid Drawing Reference
AENC-LSTC-ENG-DWG-0003

Scale	Sheet Size	Sheet	Issue
1:2,500	A0	SHEET 4 OF 7	B

THE NATIONAL GRID (NORWICH TO TILBURY) ORDER
WORKS PLANS
REGULATION 5(2)(j)
SECTION H (SHEET 5 OF 7,
THURROCK COUNCIL)

Application Document 2.3



- Legend**
- Local authority boundary
 - Section boundary & local authority boundary
 - Section boundary
 - Sheet index cutlines
 - Commencement of work
 - Termination of work
 - Termination and commencement of work
 - Order Limits
 - Limits of deviation: overhead lines
 - Limits of deviation: temporary overhead lines
 - Limits of deviation: underground cables
 - Limits of deviation: non-linear works
 - Proposed full line tension gantry (not to scale)
 - Proposed lattice pylons (not to scale)
 - Proposed low height lattice pylons (not to scale)
 - Proposed pylon removal (not to scale)
 - Proposed pylon modification (not to scale)
 - Proposed temporary pylon (angle structures only) (not to scale)
 - Proposed temporary structure (not to scale)
 - Proposed overhead line
 - Proposed underground cable centreline
 - Proposed removal of overhead line
 - Proposed modification to overhead line
 - Proposed temporary overhead line
 - Third party overhead line to be removed
 - Third party existing overhead line (modified)
 - Third party proposed overhead line
 - Third party temporary overhead line diversion
 - Third party proposed underground cable centreline
 - Proposed substation or proposed substation extension
 - Centreline of Work No. 17a

FOR CONTINUATION SEE SHEET 4

FOR CONTINUATION SEE SHEET 6

- Notes**
- These plans show the Order Limits and potential location for the works. Due to the need for future flexibility, National Grid will be applying for Order Limits and Limits of Deviation within its Development Consent Order, within which any final alignments would lie.
 - For additional detail on the plan suites, please refer to the Guide to Plans (document reference 2.0), located in the Volume 2 of the DCO application.
 - This drawing is scaled at paper size A0, therefore any prints taken at smaller sizes will affect accuracy of the measurement units and should not be scaled against.

Coordinate System: British National Grid
Sheet X Centroid Coordinate: 566256 Sheet Y Centroid Coordinate: 179075

BACKGROUND MAPPING INFORMATION HAS BEEN REPRODUCED FROM THE ORDNANCE SURVEY BY PERMISSION OF ORDNANCE SURVEY OF THE CONTROLLER OF HIS MAJESTY'S STATIONERY OFFICE. © CROWN COPYRIGHT AND DATABASE RIGHTS (2025) LICENCE OS100024241 AND AC0000807948.

Issue	Date	Remarks	Drawn	Checked	Approved
B	MAY-2026	For deadline four	TMH	JPC	KR
A	AUG-2025	For DCO submission	MAB	JPC	KR

Title

THE NATIONAL GRID
(NORWICH TO TILBURY) ORDER
WORKS PLANS
REGULATION 5(2)(j)
SECTION H (SHEET 5 OF 7,
THURROCK COUNCIL)

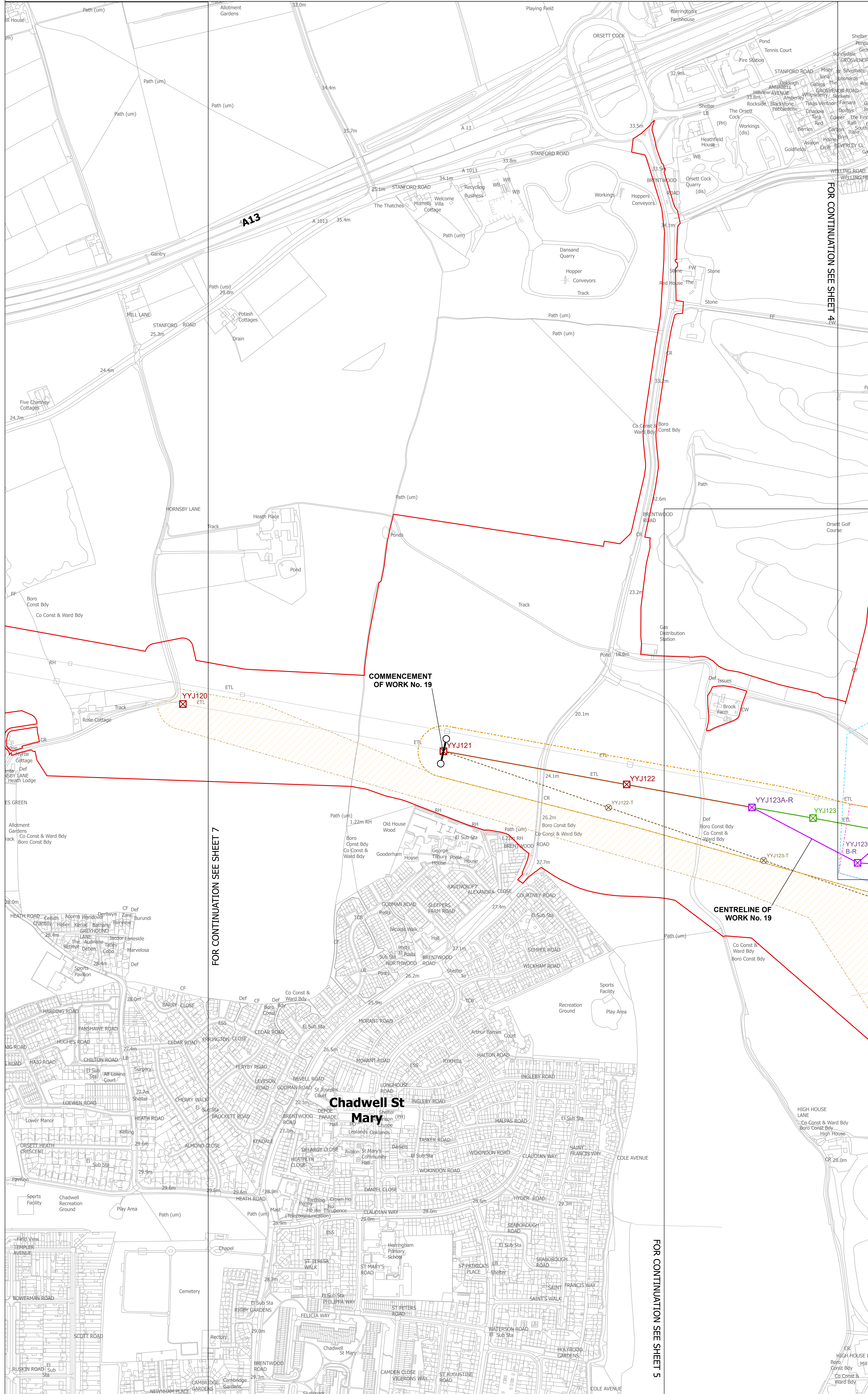
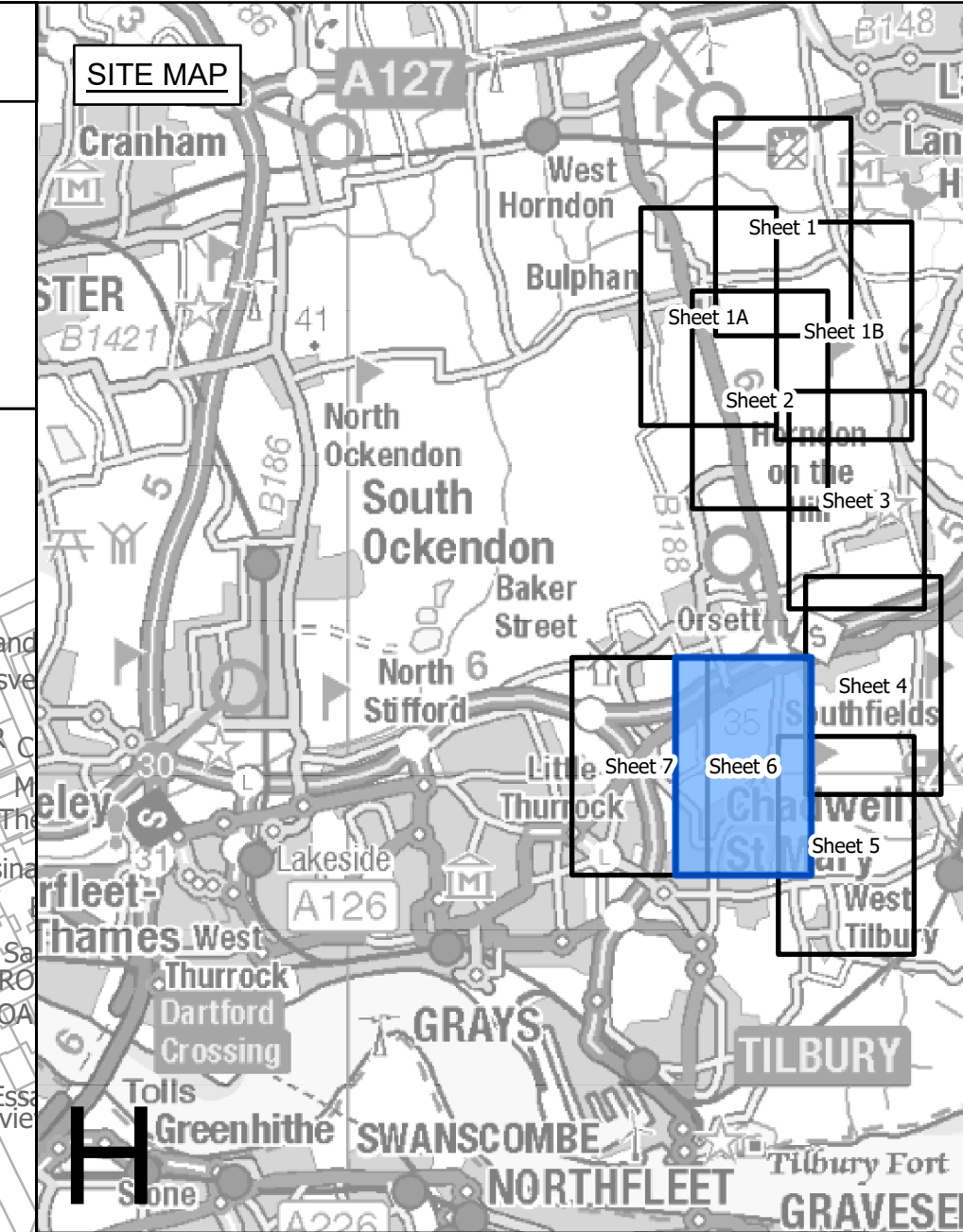
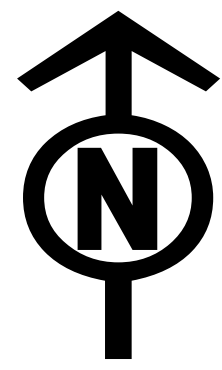
nationalgrid

PINS Application Number
EN020027

National Grid Drawing Reference
AENC-LSTC-ENG-DWG-0003

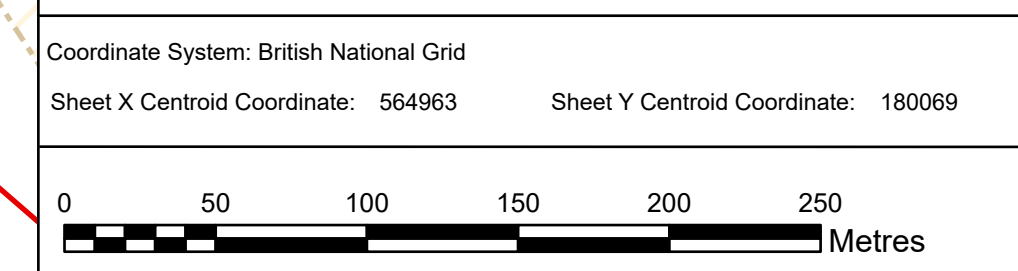
Scale	Sheet Size	Sheet	Issue
1:2,500	A0	SHEET 5 OF 7	B

THE NATIONAL GRID (NORWICH TO TILBURY) ORDER
WORKS PLANS
REGULATION 5(2)(j)
SECTION H (SHEET 6 OF 7,
THURROCK COUNCIL)



- Legend**
- Local authority boundary
 - Section boundary & local authority boundary
 - Section boundary
 - Sheet index cutlines
 - Commencement of work
 - Termination of work
 - Termination and commencement of work
 - Order Limits
 - Limits of deviation: overhead lines
 - Limits of deviation: temporary overhead lines
 - Limits of deviation: underground cables
 - Limits of deviation: non-linear works
 - Proposed full line tension gantry (not to scale)
 - Proposed lattice pylons (not to scale)
 - Proposed low height lattice pylons (not to scale)
 - Proposed pylon removal (not to scale)
 - Proposed pylon modification (not to scale)
 - Proposed temporary pylon (angle structures only) (not to scale)
 - Proposed temporary structure (not to scale)
 - Proposed overhead line
 - Proposed underground cable centreline
 - Proposed removal of overhead line
 - Proposed modification to overhead line
 - Proposed temporary overhead line
 - Third party overhead line to be removed
 - Third party existing overhead line (modified)
 - Third party proposed overhead line
 - Third party temporary overhead line diversion
 - Third party proposed underground cable centreline
 - Proposed substation or proposed substation extension
 - Centreline of Work No. 17a

- Notes**
1. These plans show the Order Limits and potential location for the works. Due to the need for future flexibility, National Grid will be applying for Order Limits and Limits of Deviation within its Development Consent Order, within which any final alignments would lie.
 2. For additional detail on the plan suites, please refer to the Guide to Plans (document reference 2.0), located in the Volume 2 of the DCO application.
 3. This drawing is scaled at paper size A0, therefore any prints taken at smaller sizes will affect accuracy of the measurement units and should not be scaled against.



BACKGROUND MAPPING INFORMATION HAS BEEN REPRODUCED FROM THE ORDNANCE SURVEY BY PERMISSION OF ORDNANCE SURVEY OF THE CONTROLLER OF HIS MAJESTY'S STATIONERY OFFICE. © CROWN COPYRIGHT AND DATABASE RIGHTS (2025) LICENCE OS100024241 AND AC0000807948.

B	MAY-2026	For deadline four	TMH	JPC	KR
A	AUG-2025	For DCO submission	MAB	JPC	KR

Issue	Date	Remarks	Drawn	Checked	Approved

Title

THE NATIONAL GRID (NORWICH TO TILBURY) ORDER
WORKS PLANS
REGULATION 5(2)(j)
SECTION H (SHEET 6 OF 7,
THURROCK COUNCIL)

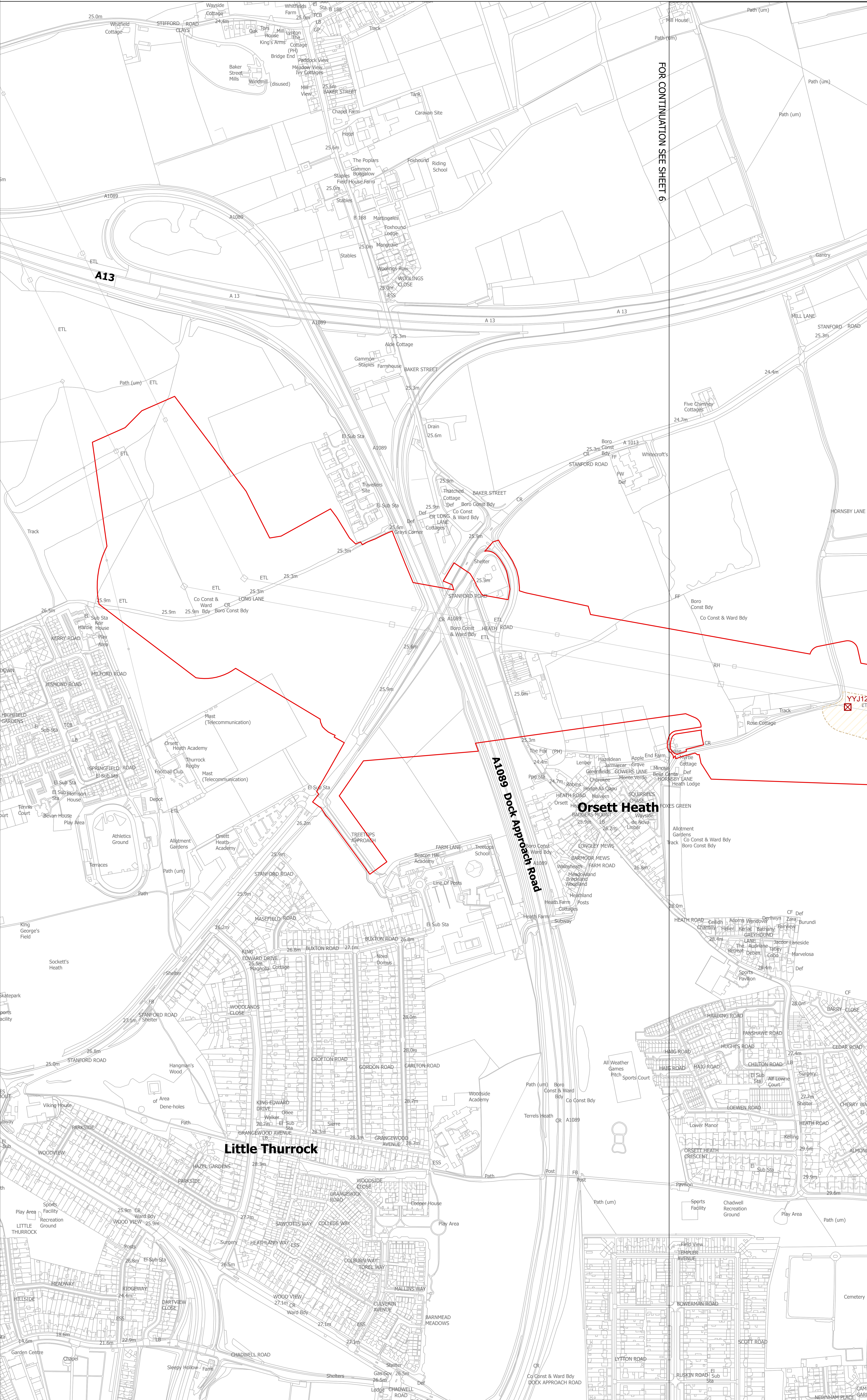
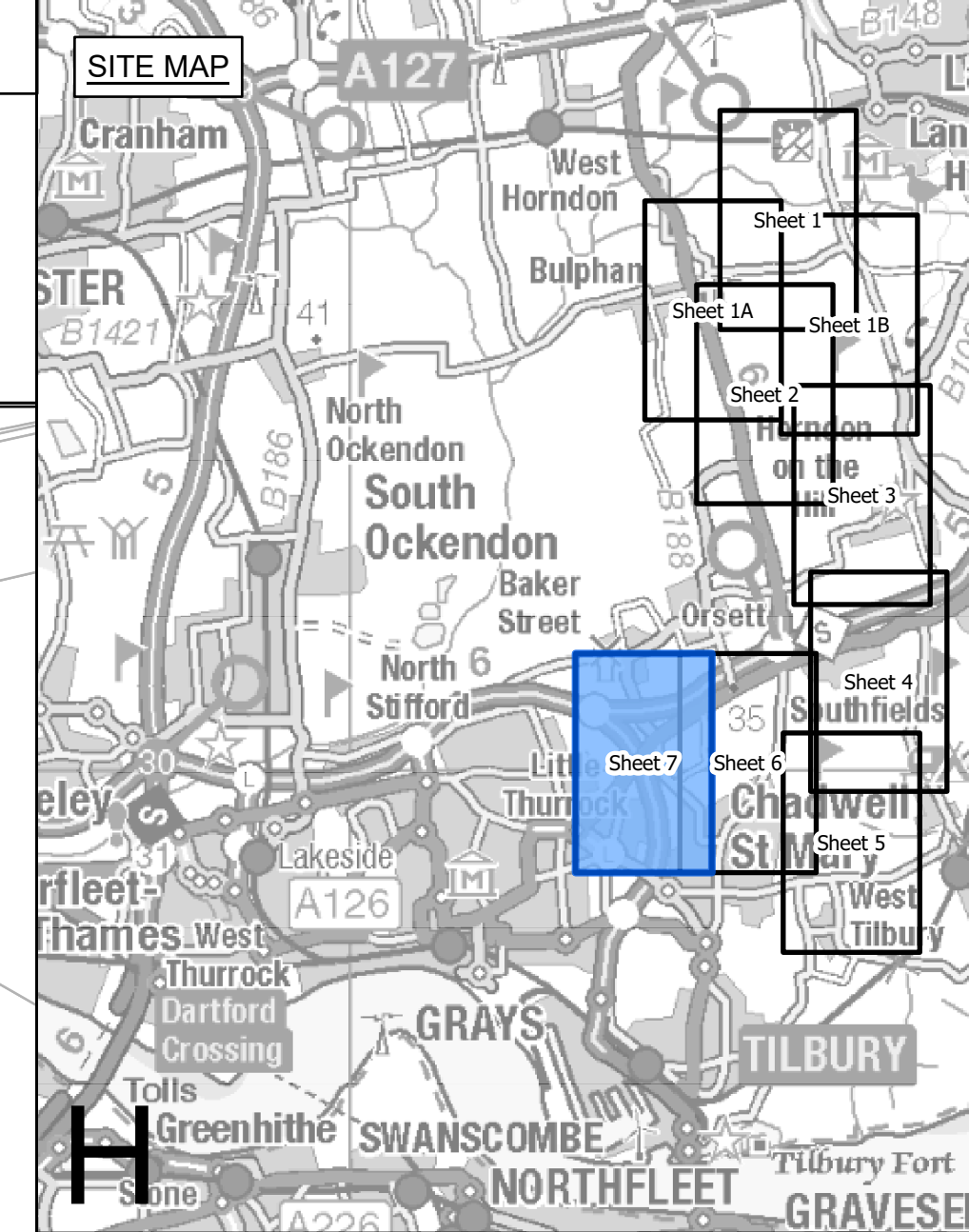
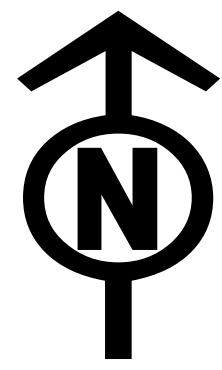
nationalgrid

PINS Application Number
EN020027

National Grid Drawing Reference
AENC-LSTC-ENG-DWG-0003

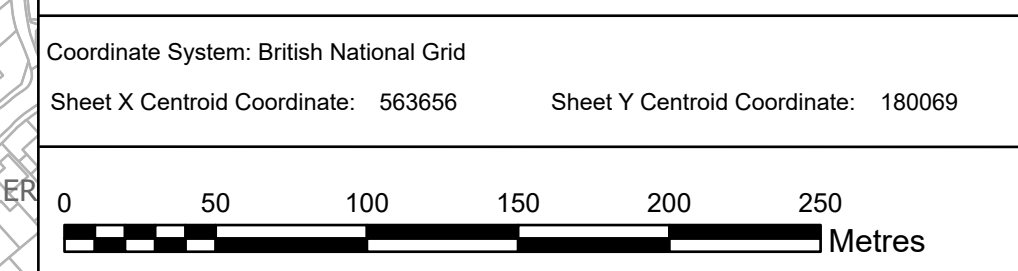
Scale	Sheet Size	Sheet	Issue
1:2,500	A0	SHEET 6 OF 7	B

THE NATIONAL GRID (NORWICH TO TILBURY) ORDER
WORKS PLANS
REGULATION 5(2)(j)
SECTION H (SHEET 7 OF 7,
THURROCK COUNCIL)



- Legend**
- Local authority boundary
 - Section boundary & local authority boundary
 - Section boundary
 - Sheet index cutlines
 - Commencement of work
 - Termination of work
 - Termination and commencement of work
 - Order Limits
 - Limits of deviation: overhead lines
 - Limits of deviation: temporary overhead lines
 - Limits of deviation: underground cables
 - Limits of deviation: non-linear works
 - Proposed full line tension gantry (not to scale)
 - Proposed lattice pylons (not to scale)
 - Proposed low height lattice pylons (not to scale)
 - Proposed pylon removal (not to scale)
 - Proposed pylon modification (not to scale)
 - Proposed temporary pylon (angle structures only) (not to scale)
 - Proposed temporary structure (not to scale)
 - Proposed overhead line
 - Proposed underground cable centreline
 - Proposed removal of overhead line
 - Proposed modification to overhead line
 - Proposed temporary overhead line
 - Third party overhead line to be removed
 - Third party existing overhead line (modified)
 - Third party proposed overhead line
 - Third party temporary overhead line diversion
 - Third party proposed underground cable centreline
 - Proposed substation or proposed substation extension
 - Centreline of Work No. 17a

- Notes**
1. These plans show the Order Limits and potential location for the works. Due to the need for future flexibility, National Grid will be applying for Order Limits and Limits of Deviation within its Development Consent Order, within which any final alignments would lie.
 2. For additional detail on the plan suites, please refer to the Guide to Plans (document reference 2.0), located in the Volume 2 of the DCO application.
 3. This drawing is scaled at paper size A0, therefore any prints taken at smaller sizes will affect accuracy of the measurement units and should not be scaled against.



BACKGROUND MAPPING INFORMATION HAS BEEN REPRODUCED FROM THE ORDNANCE SURVEY BY PERMISSION OF ORDNANCE SURVEY OF THE CONTROLLER OF HIS MAJESTY'S STATIONERY OFFICE. © CROWN COPYRIGHT AND DATABASE RIGHTS (2025) LICENCE OS100024241 AND AC0000807948.

Issue	Date	Remarks	Drawn	Checked	Approved
B	MAY-2026	For deadline four	TMH	JPC	KR
A	AUG-2025	For DCO submission	MAB	JPC	KR

Title

THE NATIONAL GRID (NORWICH TO TILBURY) ORDER
WORKS PLANS
REGULATION 5(2)(j)
SECTION H (SHEET 7 OF 7,
THURROCK COUNCIL)

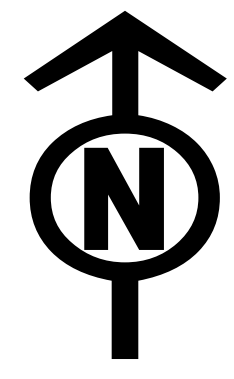
PINS Application Number

EN020027

National Grid Drawing Reference

AENC-LSTC-ENG-DWG-0003

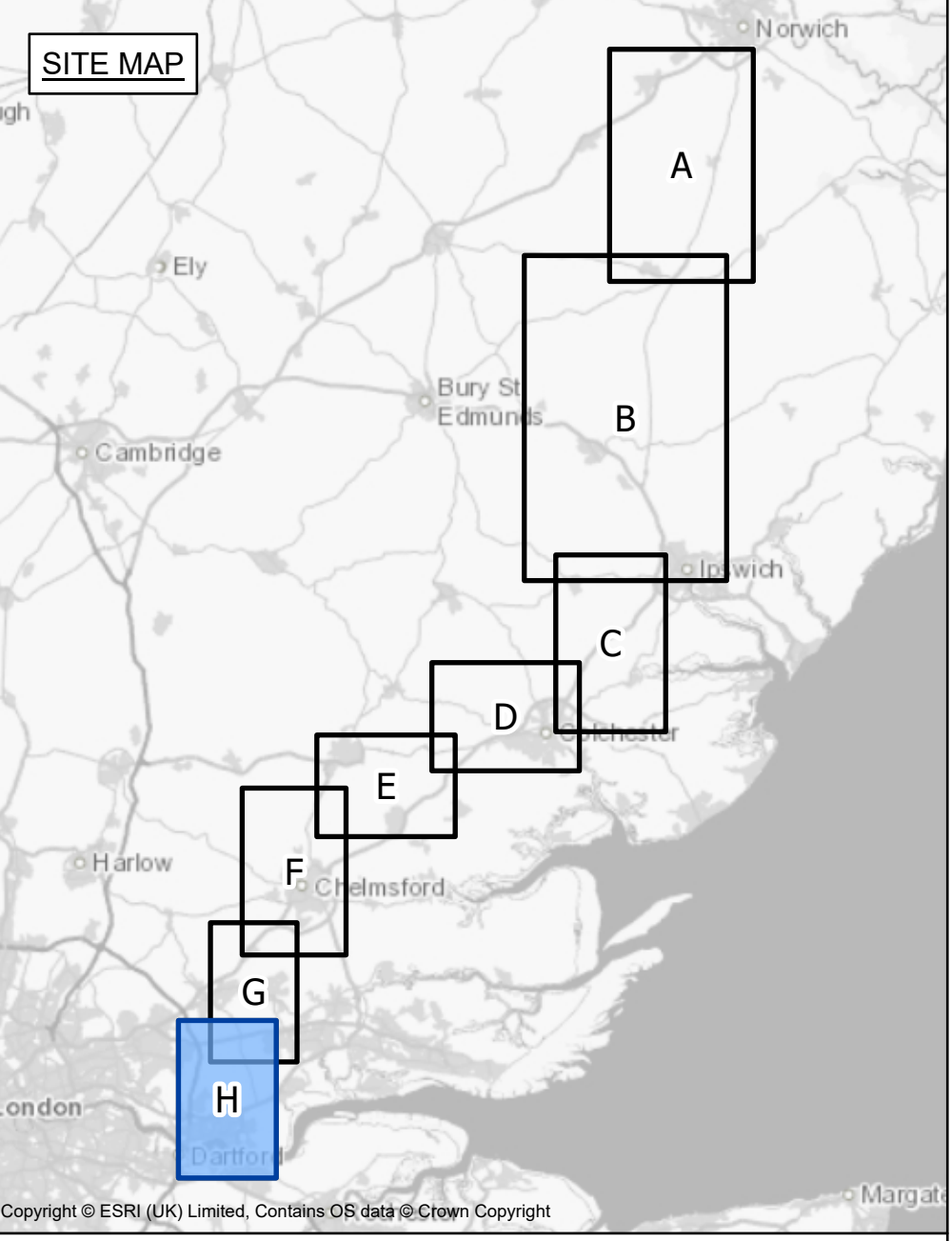
Scale	Sheet Size	Sheet	Issue
1:2,500	A0	SHEET 7 OF 7	B



THE NATIONAL GRID (NORWICH TO TILBURY) ORDER
WORKS PLANS
REGULATION 5(2)(j)
TABLE OF PARAMETERS - SECTION H (SHEET 1 OF 1,
BRENTWOOD BOROUGH COUNCIL, BASILDON BOROUGH COUNCIL AND THURROCK COUNCIL)

Application Document 2.3

SITE MAP



Infrastructure title/number	Infrastructure height above infrastructure foundation (m)	Upward extent of vertical limit of deviation (m)
TB232	68.8	6
TB233	51.7	6
TB234	53.8	6
TB235	47.8	6
TB236	47.8	6
TB237	48.7	6
TB238	42.3	18
TB239	37	18
TB240	34	18
TB241	34	18
TB242	34	18
TB243	39.3	18
TB244	51.7	6
TB245	50.8	6
TB246	50.8	6
TB247	50.8	6
TB248	54.7	6
TB249	49.1	6
TB250	53.8	6
TB251	50.8	6
TB252	43.1	6
TB253	47.8	6
TB254	51.7	6
TB255	56.8	6
TB256	51.7	6
TB257	51.7	6
TB258	58.1	6
TB259	58.1	6
TB260	52.1	6
TB261	59.8	6
TB262	54.7	6
TB263	15	Refer to note 5
TB264	15	Refer to note 5
Tilbury North Substation	Refer to note 6	Refer to note 6
YYJ120	57.7	6
YYJ121	56.7	6
YYJ122	46.7	6
YYJ123A-R	44.1	6
YYJ123B-R	52.1	6
YYJ123C-R	15	Refer to note 5
YYJ123D-R	15	Refer to note 5
Tilbury North Cable Sealing End Compound	Refer to note 6	Refer to note 6
YYJ124A-R	15	Refer to note 5
YYJ124B-R	15	Refer to note 5
YYJ124C-R	52.1	6
YYJ125-R	47.7	6
YYJ126	41.9	6
YYJ127	46.7	6
YYJ128	45.8	6
YYJ129	45.8	6

Notes

- These plans show the Order Limits and potential location for the works. Due to the need for future flexibility, National Grid will be applying for Order Limits and Limits of Deviation within its Development Consent Order, within which any final alignments would lie.
- For additional detail on the plan suites, please refer to the Guide to Plans (document reference 2.0), located in the Volume 2 of the DCO application.
- This drawing is scaled at paper size A0, therefore any prints taken at smaller sizes will affect accuracy of the measurement units and should not be scaled against.
- The foundation of infrastructure is expected to extend above ground level between 0 m and 0.6 m dependant on the topography and geotechnical conditions.
- Gantries, located within a substation or cable sealing end compound, have a 15.0 m maximum height and an upward vertical limit of deviation of 10% of that height.
- Non-linear infrastructure located within substations and cable sealing end compounds have a 15.0 m maximum height and an upward vertical limit of deviation of 10% of that height, excluding rooftop equipment, such as but not limited to, lightning protection, aerials, fall arrest systems, and handrails.
- The voltage of the TB and YYJ overhead lines is 400 kV. The voltage of the ZB overhead line is 275 kV.

Coordinate System: British National Grid
Sheet X Centroid Coordinate: 562094 Sheet Y Centroid Coordinate: 181950

BACKGROUND MAPPING INFORMATION HAS BEEN REPRODUCED FROM THE ORDNANCE SURVEY BY PERMISSION OF ORDNANCE SURVEY OF THE CONTROLLER OF HIS MAJESTY'S STATIONERY OFFICE. © CROWN COPYRIGHT AND DATABASE RIGHTS (2025) LICENCE OS100024241 AND AC0000807948.

B	MAY-2026	For deadline four	TMH	JPC	KR
A	AUG-2025	For DCO submission	MAB	JPC	KR
Issue	Date	Remarks	Drawn	Checked	Approved

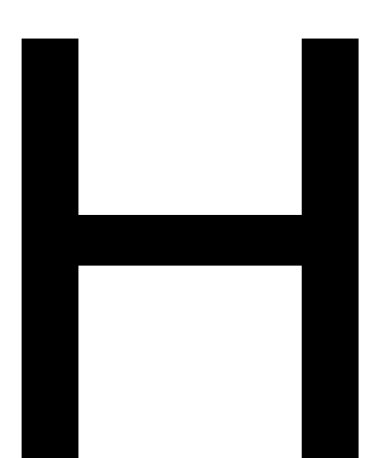
Title
THE NATIONAL GRID (NORWICH TO TILBURY) ORDER WORKS PLANS
REGULATION 5(2)(j)
TABLE OF PARAMETERS - SECTION H (SHEET 1 OF 1,
BRENTWOOD BOROUGH COUNCIL,
BASILDON BOROUGH COUNCIL AND THURROCK COUNCIL)



PINS Application Number
EN020027

National Grid Drawing Reference
AENC-LSTC-ENG-DWG-0003

Scale	Sheet Size	Sheet	Issue
N/A	A0	SHEET 1 OF 1	B



National Grid plc
National Grid House,
Warwick Technology Park,
Gallows Hill, Warwick.
CV34 6DA United Kingdom

Registered in England and Wales
No. 4031152
nationalgrid.com